

**STOKE CLIMSLAND NEIGHBOURHOOD DEVELOPMENT PLAN
EVIDENCE OVERVIEW REPORT No 9.**

THE HISTORIC ENVIRONMENT



Document Control		
Version	Details & Date	Author/Checker
V1.	Extracted, revised and updated from general evidence document v7.1 10/09/2024	SBF/Steering Group
V2.	Historic Landscape Characterisation added, Buildings at Risk Added, Non-designated assets added, document rearranged to emphasise 'appraisal' role,	SBF
V3.		
V4.		
V5.		
V6.		
V7.		
V8.		

IMPORTANT NOTE: THIS IS A 'LIVE DOCUMENT' THAT IS CONTINUOUSLY UPDATED AS NEW DATA BECOMES AVAILABLE. THE VERSION ON THE NDP WEBSITE WILL BE UPDATED REGULARLY.

Last Save Date: 11/10/2024 20:22:00

All maps © Crown copyright and database rights 2024 OS (AC0000830652). Use of this data is subject to the following terms and conditions: You are granted a non-exclusive, royalty free, revocable licence solely to view the Licensed Data for non-commercial purposes for the period during which Stoke Climsland Parish Council makes it available. You are not permitted to copy, sub-license, distribute, sell or otherwise make available the Licensed Data to third parties in any form. Third party rights to enforce the terms of this licence shall be reserved to OS.

STOKE CLIMSLAND EVIDENCE OVERVIEW REPORT

No 9: HISTORIC ENVIRONMENT

Table of Contents

1. Planning Policy Background.....	4
National Planning Policy Framework 2023.....	4
Cornwall Local Plan.....	5
Other plans and studies.....	5
Definitions.....	10
2. Baseline.....	11
Part One - Inventory.....	11
Historic Landscape.....	11
Conservation Areas.....	12
Listed Buildings.....	12
Scheduled Monuments.....	17
Registered Parks and Gardens.....	17
World Heritage Site.....	17
Archaeology.....	18
Non-Designated Heritage Assets.....	18
Heritage at Risk.....	18
<i>New Consols Mine: surface, buried and underground remains, Lockett.....</i>	18
Part Two - Appraisal.....	19
Historical Context.....	19
Stoke Climsland and Venterdon.....	21
Lockett.....	24
Downgate.....	26
Kelly Bray.....	27
Bray Shop.....	27
Design.....	28
3. Related Community Engagement Feedback.....	29
4. Key issues and implications for the NDP.....	29
APPENDIX 1: NON-DESIGNATED HERITAGE ASSETS, STOKE CLIMSLAND PARISH.....	31

1. Planning Policy Background

National Planning Policy Framework 2023.

2.1 Key messages include-

- Key Heritage assets should be recognised as an ‘irreplaceable resource’ that should be conserved in a ‘manner appropriate to their significance so that they can be enjoyed for their contribution to the quality of life of existing and future generations’ (Para 195). This should take account of ‘the wider social, cultural, economic and environmental benefits’ of conservation, including ‘desirability of sustaining and enhancing the significance of heritage assets, and putting them to viable uses consistent with their conservation’, the opportunities to draw from the historic environment to support the character of a place, and recognising the positive contribution new development can make to local character and distinctiveness (Para 196).
- Plans should set out a ‘positive strategy’ for the ‘conservation and enjoyment of the historic environment’, including those heritage assets that are most at risk (Para 196).
- ‘When considering the impact of a proposed development on the significance of a designated heritage asset, great weight should be given to the asset’s conservation (and the more important the asset, the greater the weight should be). This is irrespective of whether any potential harm amounts to substantial harm, total loss of less than substantial harm to its significance’ (Para 205).
- The effect of developments on the significance of non-designated heritage assets should be taken into account in determining applications. (Para 209).
- Good design is a key aspect of sustainable development, creates better places in which to live and work and helps make development acceptable to communities. Being clear about design expectations, and how these will be tested, is essential for achieving this [Para 131]
- Plans should, at the most appropriate level, set out a clear design vision and expectations...Neighbourhood planning groups can play an important role in identifying the special qualities of each area and explaining how this should be reflected in development, both through their own plans and by engaging in the production of design policy, guidance and codes....[Para 132].
- Design guides and codes provide a local framework for creating beautiful and distinctive places with a consistent and high quality standard of design...[Para 133].... all guides and codes should be based on effective community engagement and reflect local aspirations for the development of their area, taking into account the guidance contained in the National Design Guide and the National Model Design Code. These national documents should be used to guide decisions on applications in the absence of locally produced design guides or design codes [Para 134].
- Planning policies should ensure that developments will function well and add to the overall quality of the area, are visually attractive as a result of good architecture, layout and appropriate and effective landscaping; are sympathetic to local character and history, including the surrounding built environment and landscape setting, while not preventing or discouraging appropriate innovation or change (such as increased densities); and establish or maintain a strong sense of place, using the arrangement of streets, spaces, building types and materials to create attractive, welcoming and distinctive places to live, work and visit; optimise the potential of the site, support local facilities and transport networks; and create places that are safe, inclusive and accessible and which promote health and well-being, with a high standard of amenity for existing and future users ; and where crime and disorder, and the fear of crime, do not undermine the quality of life or community cohesion and resilience [Para 135].

- Trees make an important contribution to the character and quality of urban environments, and can also help mitigate and adapt to climate change. Planning policies and decisions should ensure that new streets are tree-lined, that opportunities are taken to incorporate trees elsewhere in developments (such as parks and community orchards) [Para 136].

Cornwall Local Plan.

2.2 Key messages **include-**

- Objective 10 within key theme 4 refers to enhancing and reinforcing local natural, landscape and historic character and distinctiveness and raising the quality of development through; ‘a. *Respecting the distinctive character of Cornwall’s diverse landscapes’ ...and...’c. Excellence in design that manages change to maintain the distinctive character and quality of Cornwall.’*
- CLP Policy 24 relates to the historic environment. It states that development proposals will be permitted where they will sustain the cultural distinctiveness and significance of Cornwall’s historic rural, urban and coastal environment by protecting, conserving and where appropriate enhancing the significance of designated and non-designated assets and their settings. Development proposals will be expected to:
 - sustain designated heritage assets
 - take opportunities to better reveal their significance
 - maintain the special character and appearance of Conservation Areas, especially those positive elements in any Conservation Area Appraisal
 - conserve and, where appropriate, enhance the design, character, appearance and historic significance of historic parks and gardens
 - conserve and, where appropriate, enhance other historic landscapes and townscapes, including registered battlefields, including the industrial mining heritage
 - protect the historic maritime environment, including the significant ports, harbours and quays.

Other plans and studies

- 2.3 **‘A Green Future: Our 25 Year Plan to Improve the Environment’ the Governments 25 Year Environment Plan**, includes policies within Chapter 2 ‘Recovering nature and enhancing the beauty of landscapes’ and Goal 6 ‘**Enhanced** beauty, heritage and engagement with the natural environment’ which directly relate to the Historic Environment SEA theme.
- 2.4 **The Government’s Statement on the Historic Environment for England** sets out its vision for the historic environment. It calls for those who have the power to shape the historic environment to recognise its value and to manage it in an intelligent manner in light of the contribution that it can make to social, economic and cultural life.
- 2.5 **Historic England Guidance and Advice notes are particularly relevant and should be read in conjunction with the others:**
- 2.6 *Conservation Area Designation, Appraisal and Management: Historic England Advice Note 1 (February 2016)* outlines ways to manage change that conserves and enhances historic areas in order to positively contribute to sustainable development. Principally, the advice note emphasises the importance of:
- Understanding the different types of special architectural and historic interest which underpin the designations; and
 - Recognising the value of implementing controls through the appraisal and/or management plan which positively contribute to the significance and value of conservation areas.

Sustainability Appraisal (SA) and Strategic Environment Assessment (SEA): Historic England Advice Note 8 (December 2016) provides support to all stakeholders involved in assessing the effects of certain plans and programmes on the historic environment. It offers advice on heritage considerations during each stage of the SA/SEA process and helps to establish the basis for robust and comprehensive assessments.

Historic Environment Good Practice Advice in Planning Note 3: The Setting of Heritage Assets (2nd Edition) (December 2017) provides general advice on understanding setting, and how it may contribute to the significance of heritage assets and allow that significance to be appreciated, as well as advice on how views can contribute to setting. Specifically, Part 2 of the advice note outlines a five stepped approach to conducting a broad assessment of setting:

Step 1: Identify which heritage assets and their settings are affected;

Step 2: Assess the degree to which these settings make a contribution to the significance of the heritage asset(s) or allow significance to be appreciated;

Step 3: Assess the effects of the proposed development, whether beneficial or harmful, on that significance or on the ability to appreciate it;

Step 4: Explore ways to maximise enhancement and avoid or minimise harm; and

Step 5: Make and document the decision and monitor outcomes.

Neighbourhood Planning and the Historic Environment: Historic England Advice Note 11 (October 2018) outlines the importance of considering the historic environment whilst preparing the plan (section 1), which culminates in a checklist of relevant issues to consider, followed by an overview of what this means in terms of evidence gathering (section 2). Sections 3 to 5 of the advice note focus on how to translate evidence into policy, understand the SEA process and Historic England's role in neighbourhood planning.

- 2.7 Historic England **also** provide technical advice and guidance on retrofitting historic buildings to improve their energy efficiency, and on flooding and historic buildings. These are referred to in more detail in Section X of the NDP Evidence Overview on Climate Change.
- 2.8 **'Heritage at the Heart of an Evolving Cornwall: A Strategy for Cornwall's Historic Environment (2022 - 2030)'** was formally adopted by Cornwall Council on the 11th of May 2022. The purpose of this strategy is to reposition heritage at the heart of how Cornwall manages change and to integrate heritage policies and plans as a proactive force for positive change. It seeks to reinforce the value of Cornwall's historic environment in understanding change, plan for the future and align resources where they will have greatest impact in the areas of highest priority. See Figure 1 for its relevance to the Stoke Climsland Parish NDP

FIGURE 1: HERITAGE AT THE HEART OF AN EVOLVING CORNWALL INTENTIONS RELEVANT TO THE STOKE CLIMSLAND PARISH NDP:

Valuing Cornish distinctiveness

- Enhance and reinforce historic character and distinctiveness and raise the quality of development through respecting the distinctive character of Cornwall's diverse landscapes
- Improve our understanding and recording of heritage at risk and what action is required to mitigate risks to assets that contribute to our cultural distinctiveness
- Encourage and where necessary enforce better management and maintenance of our historic assets

Heritage response to the climate emergency

- Promote heritage-gain in behavioural change that leads to reduction in carbon use
- Encourage and where necessary enforce better management and maintenance of our historic assets
- Use our understanding of historic landscape character, sustainable and innovative land management to inform and support delivery of appropriate climate solutions
- Encourage sustainable construction and renewable energy solutions sympathetic to Cornwall's historic environment
- Embed distinctiveness in climate solutions

Heritage response to the ecological and biodiversity emergency

- Support greater protection of rural historic landscape and heritage assets, such as Cornish hedges and network of stiles
- Ensure that adaptation and mitigation designed to alleviate the effects of climate change, and deliver environmental growth consider the significance and character of Cornwall's historic environment

Heritage and prosperity

- Tailored and informed approach to urban, rural and coastal heritage-led regeneration that responds to the challenges and opportunities faced by each community, including loss of distinctiveness and community resilience through poor development and changes of use
- Encourage heritage-led regeneration and constructive conservation to give new purpose and life to derelict historic buildings, find solutions to Heritage at Risk and to revitalise urban, rural and coastal communities and their economies
- Strengthen our ability through Planning to protect and reinforce Cornish cultural distinctiveness, ensure new buildings are of good design quality, enhance our distinctiveness and where developments are of scale, make full use of the Design Review Panel
- Support communities as they integrate the ways they value their local historic environment and distinctiveness into Neighbourhood Development Plans, Village Design Statements and the like
- Utilise enabling development, Article 4 and Section 106 agreement funds to design positive outcomes for Cornwall's historic urban and rural landscapes and communities
- Encourage and support communities seeking statutory designation for those heritage assets that meet national selection criteria and also contribute to Cornish cultural distinctiveness and consider the benefits of local listing for specific areas or individual assets
- Embed heritage in landscape policy
- Encourage the establishment of traditional varieties of local produce and traditional breeds, particularly through the re-establishment of historic orchards and conservation grazing initiatives
- Support farm diversification to create sustainable business models for family farms, encouraging the appropriate reuse of traditional agricultural buildings in a way which also maintains the character and distinctiveness of farmyards and individual rural buildings through the Farmstead Characterisation guidance
- Promote the distinctiveness of our towns and villages, understanding the value that traditional shopfronts, historic buildings and other features bring to the economic vibrancy of settlements and how we experience and enjoy these places
- Collaborate in action to transform our visitor economy into a model that is sustainable following the principles of regenerative eco-tourism

Enjoying, understanding, valuing and caring for our heritage

- Improve accessibility and promote the benefits of access to heritage and historic environment, volunteering and participation;
- Supporting the use of the Cornish language and local dialect, especially in the naming of new roads, developments and where signage is being replaced/ renewed, researching and reviving historic names

Community leadership and governance

- Advocate for heritage advice to be actively sought so that it can contribute positively to designation, design, decision-making and enforcement as part of place-shaping and regeneration
- Improve implementation and community ownership of Conservation Management Plans, Heritage Impact Assessments and Conservation Area Appraisals
- Support communities to take a more active role in identifying and caring for heritage assets, including finding sustainable solutions to heritage assets at risk
- Promote the maintenance, repair and restoration of the fabric and character of buildings, structures, places, landscape and artefacts, and promote and develop traditional skills and materials while doing so
- Provide guidance on appropriate repairs and materials to ensure longer life and reduce maintenance costs, e.g. hardwood cills, scarfing in quality timber, long-life paints, breathable paint on walls...
- Contribute to place-making and regeneration, in strategic, neighbourhood and master planning, and through formal planning processes and development management
- Encourage and support communities to review and update Conservation Area Appraisal Management Plans and Conservation Management Plans
- Support the protection of heritage assets through statutory designation (Listing, Scheduling and Registering) and local designation, alongside advocacy, policy and planning
- Provide training and resources to support communities to monitor the condition of heritage assets, encouraging heritage volunteering and local advocacy

2.9 As part of the Cornwall Devolution Deal, the ‘**Cornwall Historic Environment Cultural Distinctiveness and Significance Project**’, was commissioned to make sure that Cornwall’s historic environment is recognised when designing change and making planning decisions. The project has developed documents which include some prompts, suggestions, ambitions and hopes. ‘Distinctively Cornish: Valuing What Makes Cornwall Cornish’ says that ‘All places within Cornwall, while different or distinct from each other, and whether ancient or modern, are distinctively Cornish. They have been made so in the past, and they can be made so (and kept so) in the future’.

2.10 It identifies five themes to sum up what is distinctive about Cornwall:

One: Linguistic - A Celtic language, and a Cornish way with the English language: both still spoken and both visible every day in the names of places, from tre to splat, chy to row and in dialect, from loustering to scheming.

Two: Economic - A uniquely diverse rural, industrial, urban and marine economy, much of it characterised by a particularly Cornish resourcefulness and innovation, adapting to conditions and taking opportunities.

Three: Topographical - Distinctively Cornish ways of living in and working with a beautiful, rugged and exciting natural topography.

Four: Natural - Equally distinctively Cornish ways of adapting a natural environment that reflects that diverse topography, especially its flora and fauna. Cornish ways of adapting to that natural environment, living closely and respectfully with nature, and also introducing a distinctively Cornish suite of non-native plants and animals.

Five: Spirit - The distinctive Cornish identity and spirit, Onen hag Oll, One and All. The ways we have of relating to place, to each other, to our culture and that of others. From maintaining customs to gathering for ceremonies, festivals, feasting and pleasures, partaking in rituals and religious practices, engaging in raucous and more disciplined sports, composing and retelling stories, creating art and

literature, making music and dancing wildly; all these contribute tangibly and intelligibly to what it is that makes Cornwall distinctive.

2.11 Caring for this distinctiveness when making decisions that will affect Cornwall in the future will help the economy, society and individual people in many ways:

- It will reduce or halt the gradual diminishment of Cornwall's distinctiveness, which to many is its principal asset, the basis of its brand, a major contributor to the beauty and the interest of its places
- It will ensure that Cornwall's landscape, towns and sites continue to be a major part of Cornwall's draw for visitors, contributing greatly to the tourism that is worth nearly £2 billion a year to Cornwall's economy, supporting jobs and giving pleasure to people from all over the world
- It will help make Cornwall a better place to be, a more attractive place in which to work, live, relax and play. This will increase people's sense of well-being and encourage them to be more active and healthier
- It will inspire people to learn about and engage more actively with the places they know and love, and get more involved in deciding their future

2.12 This will contribute to Cornwall's sustainability and resilience and ensure that future generations can continue to draw on the cultural and heritage capital that distinctiveness contributes to. Additionally, it will encourage younger people's involvement in maintaining, celebrating and understanding Cornwall.

2.13 '**Distinctively Cornish: Valuing What Makes Cornwall Cornish**' identifies two forms of distinctiveness:

The Typical: The first form of distinctiveness depends on the many aspects of our historic environment that are 'Typical of Cornwall' or more usually typical of areas within it. Typical aspects of the historic environment may be found through all or large parts of Cornwall or they may be restricted to areas as small as a corner of a parish.

The Particular: The second form of distinctiveness recognises that there are some aspects of our historic environment that are Particular to Cornwall, either not found elsewhere or much less frequently such as particular forms of historic structures or archaeological sites, china clay and china stone workings, tin mines, miners' smallholdings, and terraces and rows of industrial workers' housing.

2.14 The companion Document '**Using Cornish Cultural Distinctiveness**' contains an advice note as to how NDPs can help to care for, value and enhance Cornish distinctiveness through the application of a 'distinctiveness assessment framework' in the NDP formulation process which will help to understand and describe how the historic landscape, buildings and places in the NDP area contribute to its sense of place and cultural distinctiveness and develop policies that will care for and reinforce that distinctiveness. This NDP's Local Greenspace Report and Design Note together represent the NDP's Cornish Distinctiveness Assessment, which is reflected in the policies of this NDP.

Definitions.

2.15 There are important definitions which need to be understood [see Figure 2]

FIGURE 2: HELPFUL DEFINITIONS

Historic Environment:

‘All aspects of the environment resulting from the interaction between people and places through time, including all surviving physical remains of past human activity, whether visible, buried or submerged, and landscaped and planted or managed flora.’ [NPPF 2019]

Conservation (for heritage policy):

‘The process of maintaining and managing change to a heritage asset in a way that sustains and, where appropriate, enhances its significance.’ [NPPF 2019]

Heritage asset:

‘A building, monument, site, place, area or landscape identified as having a degree of significance meriting consideration in planning decisions, because of its heritage interest. Heritage asset includes designated heritage assets and assets identified by the local planning authority (including local listing).’ [NPPF 2019]

Designated heritage asset:

‘A World Heritage Site, Scheduled Monument, Listed Building, Protected Wreck Site, Registered Park and Garden, Registered Battlefield or Conservation Area designated under the relevant legislation.’ [NPPF 2019]
These are protected by legislation, national and local planning authority policies.

Undesignated heritage asset:

There are also sites, monuments, buildings, places, areas and landscapes that do not meet the criteria for formal designation, but which are locally valued due to their heritage interest and merit consideration in planning. These are called non-designated heritage assets.

They may include assets which have been identified from a range of sources such as:

- a ‘local list’ prepared by the local planning authority
- the local Historic Environment Record as a result of research,
- conservation area appraisals and reviews,
- decision-making on planning applications,
- specialist studies associated with, for example, regeneration initiatives.

They can also include ‘locally valued heritage assets’ identified by an NDP group through community engagement as part of the preparation of its Plan.

[Undesignated heritage assets may be listed in an NDP policy, and their conservation promoted through a bespoke neighbourhood plan policy which sets out how proposals affecting non-designated heritage assets on the list will be considered]

Setting of a heritage asset:

The surroundings in which a heritage asset is experienced. Its extent is not fixed and may change as the asset and its surroundings evolve. Elements of a setting may make a positive or negative contribution to the significance of an asset, may affect the ability to appreciate that significance or may be neutral.

The setting of a heritage structure, site or area is defined as the immediate and extended environment that is part of, or contributes to, its significance and distinctive character. Beyond the physical and visual aspects, the setting includes interaction with the natural environment; past or present social or spiritual practices, customs, traditional knowledge, use or activities and other forms of intangible cultural heritage aspects that created and form the space as well as the current and dynamic cultural, social, and economic context’ (Xi’an Declaration on the Conservation of the Setting of Heritage Structures, Sites and Areas, ICOMOS, 2005)

Significance (for heritage policy)

The value of a heritage asset to this and future generations because of its heritage interest. The interest may be archaeological, architectural, artistic or historic. Significance derives not only from a heritage asset's physical presence, but also from its setting. For World Heritage Sites, the cultural value described within each site's Statement of Outstanding Universal Value forms part of its significance.

Heritage Interpretation

'Activities intended to heighten public awareness and enhance understanding of cultural heritage sites. These can include print and electronic publications, public lectures, on-site and directly related off-site installations, educational programs, community activities, and ongoing research, training, and evaluation of the interpretation process itself. ([ICOMOS Charter for the Interpretation and Presentation of Cultural Heritage Sites 2008](#))

Conservation v Preservation

Conservation is the process of maintaining and managing change to a heritage asset in a way that sustains and where appropriate enhances its significance. Preservation is to protect or keep something as it is or in its original state, to preserve it from harm to its significance and fabric. In Planning the focus is on conservation

However, conservation of the most sensitive and important buildings or sites may come close to absolute physical preservation, but those instances will be very rare. The vast majority of our heritage assets are capable of being adapted or worked around to some extent without a loss of their significance. Indeed, change is often vital to facilitate the optimum viable use of an asset so that it continues to receive investment.

2. Baseline

Part One - Inventory

Historic Landscape

- 2.1 A basic premise of Historic Landscape Characterisation (HLC) is that the whole of Cornwall is one continuous but multifarious historic landscape. The HLC allows the historic dimension of the whole landscape to be fully considered and provides a readily understood context for surviving archaeological and historical remains. It enables historic environment assessments to be placed alongside the natural environment and other landscape character studies in discussions of sustainable development.
- 2.2 In Stoke Climsland Parish the Historic Landscape Characterisation (see Figure 3) shows much of the land on the narrow plateau between the Inny and Lockett Stream to be mostly medieval, featuring farming settlements documented before the 17th century AD with anciently enclosed field patterns that are distinct from the generally straight-sided fields of later enclosure. These areas are fringed to the east by Post-Medieval enclosed land whose field systems have been substantially altered by large-scale hedge removal and intakes from rough ground, woodland and lowland marsh in the 20th century. However further east at Tremollet Down is land enclosed in the 17th, 18th and 19th centuries, from land that was previously open rough grazing and medieval commons. More extensive areas of similarly enclosed land cluster below Kit Hill. At Whiteford Farm there is evidence of an 18/19th century ornamental landscape.
- 2.3 In short, a large part of the area is a medieval landscape, overlaid by post mediaeval industry in the form of mine sites and miners settlements, and more recent areas of modern agricultural field formations.

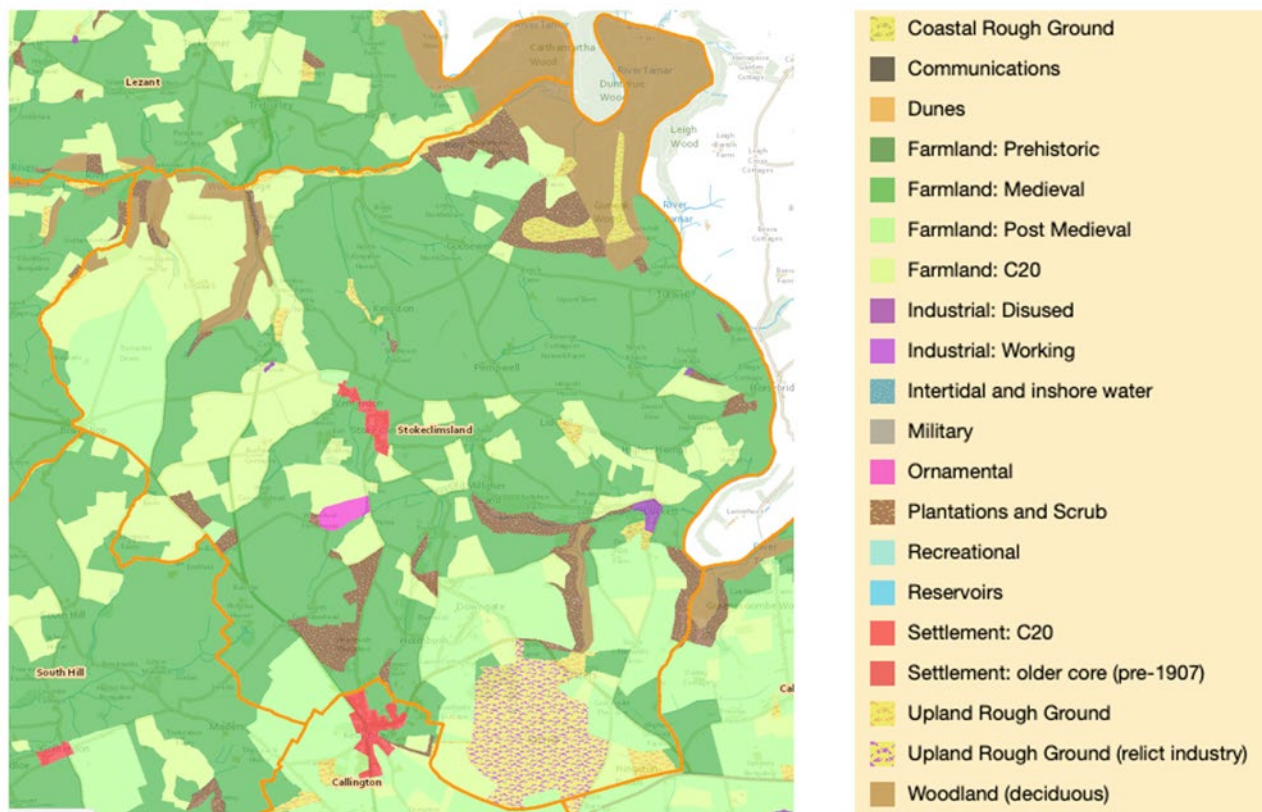


FIGURE 3: HISTORIC LANDSCAPE CHARACTERISATION STOKE CLIMSLAND PARISH

Conservation Areas

- 2.4 A Conservation Area is an area of special architectural or historic interest with a character or appearance that is desirable to preserve or enhance. There are no standard specifications for Conservation Areas; they may include the historic parts of a town or village, have an important industrial past or, for example, cover an historic park. Invariably such areas will have a concentration of historic buildings, many of which may be listed. However, it is the quality and interest of the area which will be significant. This may include spaces around buildings, views and vistas, historic street patterns, gardens (public and private), trees and field systems.
- 2.5 Stoke Climsland has two Conservation Areas – Stoke Climsland village itself, and Luckett. Both have Conservation Area Character Statements which provide very useful evidence to guide the NDP.

Listed Buildings

- 2.6 **Listed Buildings** and other structures are those that have been listed by the Secretary of State (for Digital, Culture, Media and Sport) as being of special architectural or historic interest. The general principles are that all buildings built before 1700 which survive in anything like their original condition are likely to be listed, as are most buildings built between 1700 and 1850. Particularly careful selection is required for buildings from the period after 1945. Buildings less than 30 years old are not normally considered to be of special architectural or historic interest because they have yet to stand the test of time. On listing, buildings are graded as I, II* or II. The grading is a general indication of the level of importance of the building. Grade I and II* buildings make up roughly 2.5% and 5.8% of the total list, respectively. Over 90% are Grade II.

2.7 The effect of listing is that Listed Building Consent will be required for demolition or alteration or extension works that affect the character of the building as a building of special architectural or historic interest. Consent is sought from the local planning authority and procedurally is handled much like a planning application. Anyone carrying out works without proper consent may be required to reverse them and/or face prosecution.

2.8 In Stoke Climsland Parish there are 114 Listed structures. These are:

Location	Grade
1 AND 2 THE VILLAGE Stokeclimsland Cornwall	II
BARN AND COWHOUSE ON NORTH EAST SIDE OF FARMYARD AT MIDDLE HAMPT Stokeclimsland Cornwall	II
BARN APPROXIMATELY 80 METRES NORTH EAST OF TREHILL FARMHOUSE Stokeclimsland Cornwall	II
BARN PARK COTTAGE Stokeclimsland Cornwall	II
BARN WITH HORSE ENGINE HOUSE APPROXIMATELY 20 METRES EAST OF BURRATON FARMHOUSE BURRATON Stokeclimsland Cornwall	II
BARN/COWHOUSE APPROXIMATELY 10 METRES NORTH WEST OF HIGHER HAMPT FARMHOUSE HIGHER HAMPT Stokeclimsland Cornwall	II
BARN/COWHOUSE APPROXIMATELY 25 METRES SOUTH EAST OF LOWER LIDWELL FARMHOUSE LIDWELL Stokeclimsland Cornwall	II
BARN/COWHOUSE ATTACHED TO LOWER HAMPT Stokeclimsland Cornwall	II
BEALSMILL BRIDGE BEALSMILL Stokeclimsland Cornwall	II
BOUNDARY STONE AT NGR SX 3590 7695 Stokeclimsland Cornwall	II
BOUNDARY STONE AT NGR SX3459872005 South Hill Cornwall	II
BOUNDARY STONE AT NGR SX3568971806 A 338 Stokeclimsland Cornwall	II
BRIDGE COTTAGE HILL NIGH LUCKETT Stokeclimsland Cornwall	II
BRIDGE FARMHOUSE BRIDGE FARM Stokeclimsland Cornwall	II
BURRATON FARMHOUSE BURRATON Stokeclimsland Cornwall	II
CHIMNEY HOLMBUSH MINE HOLMBUSH MINE Stokeclimsland Cornwall	II
CHIMNEY HOLMBUSH MINE HOLMBUSH MINE Stokeclimsland Cornwall	II
CHIMNEY APPROXIMATELY 110 METRES WEST OF LUCKETTHILL FARM COTTAGE LUCKETT Stokeclimsland Cornwall	II
CHIMNEY APPROXIMATELY 550 METRES SOUTH OF HAYLANDS Stokeclimsland Cornwall	II
CHIMNEY AT DEER PARK MINE Stokeclimsland Cornwall	II
CHIMNEY AT EAST KITHILL MINE HINGSTON DOWN Stokeclimsland Cornwall	II
CHIMNEY AT KITHILL GREAT CONSOLS MINE KIT HILL Stokeclimsland Cornwall	II
CHIMNEY AT SOUTH KITHILL MINE KIT HILL Stokeclimsland Cornwall	II

CHIMNEY AT WHEAL SHEBA (NGR SX 3714 7365) OLDMILL Stokeclimsland Cornwall	II
CLEMATIS COTTAGE PENLEAT COTTAGE Stokeclimsland Cornwall	II
CLIMSON CLIMSOM Stokeclimsland Cornwall	II
CLITTERS HOUSE AND ATTACHED GRANARY Stokeclimsland Cornwall	II
COWHOUSE AT WEST COOMBESHEAD WEST COOMBESHEAD Stokeclimsland Cornwall	II
COWHOUSE ON SOUTH EAST SIDE OF FARMYARD AT MIDDLE HAMPT Stokeclimsland Cornwall	II
DEER PARK FARMHOUSE Stokeclimsland Cornwall	II
DIRECTION POST AT NGR 3688 7598 Stokeclimsland Cornwall	II
DIRECTION POST AT NGR 3712 7623 Stokeclimsland Cornwall	II
DIRECTION POST AT NGR SX 3739 7480 Stokeclimsland Cornwall	II
DISUSED COTTAGE APPROXIMATELY 15 METRES SOUTH WEST OF SOUTH COOMBE SOUTH COOMBE Stokeclimsland Cornwall	II
ELM COTTAGE B3257 Stokeclimsland Cornwall	II
ENGINE HOUSE AND ATTACHED CHIMNEY WINSOR LANE HOLMBUSH MINE Stokeclimsland Cornwall	II
ENGINE HOUSE AND ATTACHED CHIMNEY APPROXIMATELY 50 METRES WEST OF TRELANE LUCKETT Stokeclimsland Cornwall	II
ENGINE HOUSE AND ATTACHED CHIMNEY AT BROADGATE MINE BROADGATE Stokeclimsland Cornwall	II
ENGINE HOUSE APPROXIMATELY 120 METRES SOUTH OF TRELANE LUCKETT Stokeclimsland Cornwall	II
FARM BUILDING RANGE IMMEDIATELY WEST OF HIGHER HAMPT FARMHOUSE HIGHER HAMPT Stokeclimsland Cornwall	II
FORMER CIDER MILL IMMEDIATELY TO NORTH EAST OF LOWER LIDWELL FARMHOUSE LIDWELL Stokeclimsland Cornwall	II
FORMER PLYMOUTH BRETHREN CHAPEL AND ATTACHED MANSE HIGHER HAMPT Stokeclimsland Cornwall	II
GARDEN WALLS IMMEDIATELY TO NORTH AND WEST OF WHITEFORD WHITEFORD GARDENS Stokeclimsland Cornwall	II
GLEBE COTTAGE Stokeclimsland Cornwall	II
GROUP OF 3 MONUMENTS APPROXIMATELY 5 METRES NORTH AND NORTH WEST OF TOWER OF STOKE CLIMSLAND CHURCH Stokeclimsland Cornwall	II
GROUP OF 3 MONUMENTS APPROXIMATELY 5 TO 10 METRES SOUTH OF SOUTH AISLE OF STOKE CLIMSLAND CHURCH Stokeclimsland Cornwall	II
HIGHER CROCKETT FARMHOUSE Stokeclimsland Cornwall	II
HIGHER HAMPT FARMHOUSE HIGHER HAMPT Stokeclimsland Cornwall	II
HIGHER LIDWELL LIDWELL Stokeclimsland Cornwall	II

HIGHER OLDCLIMS Stokeclimsland Cornwall	II
HIGHER PEMPWELL PEMPWELL Stokeclimsland Cornwall	II
HIGHER SOUTH COOMBE SOUTH COOMBE ROAD SOUTH COOMBE Stokeclimsland Cornwall	II
HIGHER TOWN 1-4 Stokeclimsland Cornwall	II
HILLSIDE Stokeclimsland Cornwall	II
HOLWELL FARMHOUSE Stokeclimsland Cornwall	II
HORSE BRIDGE HORSEBRIDGE Sydenham Damerel West Devon Devon	I
KINGSTON KINGSTON Stokeclimsland Cornwall	II
LIDWELL FARMHOUSE LIDWELL Stokeclimsland Cornwall	II
LOWER HAMPT INCLUDING ATTACHED WALL AND ARCH WAY Stokeclimsland Cornwall	II*
LOWER LIDWELL FARMHOUSE LIDWELL Stokeclimsland Cornwall	II
LOWER PEMPWELL PEMPWELL Stokeclimsland Cornwall	II
LOWER TOWN 1-4 Stokeclimsland Cornwall	II
LUCKET BRIDGE LUCKETT Stokeclimsland Cornwall	II
LUCKETT HILL COTTAGE LUCKETT Stokeclimsland Cornwall	II
MANOR COTTAGE Stokeclimsland Cornwall	II
MIDDLE HAMPT Stokeclimsland Cornwall	II
MILESTONE AT NGR SX 3384 7395 B3257 Stokeclimsland Cornwall	II
MILESTONE AT NGR SX 3545 7215 A388 Stokeclimsland Cornwall	II
MILESTONE AT NGR SX 3601 7295 Stokeclimsland Cornwall	II
MILESTONE AT NGR SX 3603 7451 Stokeclimsland Cornwall	II
MILESTONE AT NGR SX 3608 7603 Stokeclimsland Cornwall	II
MILESTONE AT NGR SX 3838 7132 HINGSTON DOWN Stokeclimsland Cornwall	II
MILESTONE AT NGR SX 3883 7288 Stokeclimsland Cornwall	II
MILESTONE AT NGR SX 3989 7486 HORSEBRIDGE Stokeclimsland Cornwall	II
NEWMILLS Stokeclimsland Cornwall	II
NEWMILLS BRIDGE NEWMILLS Stokeclimsland Cornwall	II
NORTHDOWN FARMHOUSE AND ATTACHED BARN Stokeclimsland Cornwall	II
OLD MILL COTTAGE OLDMILL Stokeclimsland Cornwall	II
OLDCLIMS Stokeclimsland Cornwall	II
Opposite the churchyard of Stoke Climsland Parish Church Callington PL17 8NY Stokeclimsland Cornwall	II
OUTBUILDING APPROXIMATELY 10 METRES SOUTH OF SOUTH COOMBE SOUTH COOMBE Stokeclimsland Cornwall	II

OUTBUILDING IMMEDIATELY SOUTH EAST OF BURRATON FARMHOUSE Stokeclimsland Cornwall	II
PARISH BOUNDARY STONE 250 METRES TO NORTH-WEST OF TAYLOR SHOP B 3257 Stokeclimsland Cornwall	II
PARISH BOUNDARY STONE 300 METRES TO NORTH OF PITT FARM B 3257 South Hill Cornwall	II
PENDRAGON HOUSE AND ATTACHED GARDEN WALLS Stokeclimsland Cornwall	II
Pigsties adjoining south west of Higher Hampt Farmhouse HIGHER HAMPT Stokeclimsland Cornwall	II
POST OFFICE Stokeclimsland Cornwall	II
RANGE OF FARM BUILDINGS APPROXIMATELY 15 METRES NORTH WEST OF DEER PARK FARMHOUSE Stokeclimsland Cornwall	II
RANGE OF FARMBUILDINGS ON SOUTH WEST SIDE OF FARMYARD APPROXIMATELY 15 METRES NORTH WEST OF BRIDGE FARMHOUSE BRIDGE FARM Stokeclimsland Cornwall	II
REMAINS OF BUILDING APPROXIMATELY 10 METRES SOUTH EAST OF CHIMNEY AT EAST KITHILL MINE HINGSTON DOWN Stokeclimsland Cornwall	II
REMAINS OF ENGINE HOUSE HOLMBUSH MINE HOLMBUSH MINE Stokeclimsland Cornwall	II
REMAINS OF ENGINE HOUSE AT DEER PARK MINE Stokeclimsland Cornwall	II
REMAINS OF ENGINE HOUSE AT EAST KITHILL MINE HINGSTON DOWN Stokeclimsland Cornwall	II
REMAINS OF LARGE ENGINE HOUSE HOLMBUSH MINE HOLBUSH MINE Stokeclimsland Cornwall	II
ROW OF ARSENIC CALCINERS APPROXIMATELY 250 METRES SOUTH WEST OF CLEMATIS AND PENLEAT COTTAGES LUCKETT Stokeclimsland Cornwall	II
SHUTTA STOKE ROAD Stokeclimsland Cornwall	II
SOUTH ALSTON FARMHOUSE ALSTON Stokeclimsland Cornwall	II
SOUTH COOMBE SOUTH COOMBE ROAD SOUTH COOMBE Stokeclimsland Cornwall	II
SPRING COTTAGE Stokeclimsland Cornwall	II
STOKE CLIMSLAND CHURCH Stokeclimsland Cornwall	II*
Stoke Climsland Village Hall Stoke Climsland Callington PL17 8NY Stokeclimsland Cornwall	II
Stokeclimsland Cornwall	II
TEMPLE APPROXIMATELY 270 METRES NORTH WEST OF WHITEFORD WHITEFORD GARDENS Stokeclimsland Cornwall	II
TREHANE MONUMENT APPROXIMATELY 7 METRES SOUTH EAST OF SOUTH AISLE OF STOKE CLIMSLAND CHURCH Stokeclimsland Cornwall	II
TRELANE Stokeclimsland Cornwall	II
TRESALLACK TRSALLACK Stokeclimsland Cornwall	II
TURLEA TRELEIGH Stokeclimsland Cornwall	II

TUTVALE TUTWELL Stokeclimsland Cornwall	II
U SHAPED RANGE OF FARMBUILDINGS APPROXIMATELY 25 METRES SOUTH EAST OF BURRATON FARMHOUSE BURRATON Stokeclimsland Cornwall	II
UNIDENTIFIED MONUMENT APPROXIMATELY 5 METRES SOUTH WEST OF SOUTH PORCH OF STOKE CLIMSLAND CHURCH Stokeclimsland Cornwall	II
VALIMA Stokeclimsland Cornwall	II
WELLTOWN Stokeclimsland Cornwall	II
WHITEFORD WHITEFORD GARDENS Stokeclimsland Cornwall	II
WOODA A388 Stokeclimsland Cornwall	II

Scheduled Monuments

2.9 There are 7 Scheduled Ancient Monuments in the Parish, although some are of multiple objects, so in fact the actual number may be greater. These are:

Location
Bowl barrow 60m north-west of Tamar View Farm
Round barrows on Hingston Down
Enclosure on Kit Hill
Holmbush Mine: Windsor Lane rotative engine house with adjacent boiler house, loadings and platform
Holmbush Mine: Hitchen's Shaft complex
Horse Bridge
New Consols Mine: surface, buried and underground remains, Lockett

Registered Parks and Gardens

2.10 There is one Registered Park and Garden:

Location	Grade:
Endsleigh	I

World Heritage Site

2.11 A large part of the south of the Parish is in the [Cornwall and West Devon Mining Landscape](#) designation (see Map 6) a designated heritage asset of the highest global significance recognised and managed under the Convention Concerning the Protection of the World Cultural and Natural Heritage.

2.12 Development within the WHS and its setting should accord with the WHS Management Plan. Proposals that would result in harm to the authenticity and integrity of the Outstanding Universal Value, should be wholly exceptional. If the impact of the proposal is neutral, either on the significance or setting, then opportunities to enhance or better reveal their significance should be taken. A large part of the WHS within the Parish is protected by the policies applicable to the Lockett Conservation Area, whilst the listed buildings and SAMs in the area have their own statutory protection. However, the unlisted assets which make up the World Heritage Site, such as the scatter of miner's smallholdings across the landscape, tramway remains, spoil heaps and so on, are less well protected.

Archaeology

2.13 Apart from the officially scheduled and protected ancient remains, the Parish features and extensive archaeology, dating from pre-historic times through to the modern. These include features such as Neolithic ‘findspots’, the site of a possible early medieval chapel, evidence of early and later medieval field systems, and post medieval quarries and spoil tips. A list, extracted from the Cornwall Historic Environment Record, is attached as Appendix 1.


Non-Designated Heritage Assets

2.14 Many buildings, structures and even field boundaries and cropmarks can have historic significance and be an important part of the setting for formally designated assets such as Listed buildings or SAMs. These can be identified from the [Cornwall Historic Environment Register](#) and are listed in Appendix 1.

Heritage at Risk

2.15 Historic England’s Heritage at Risk (HAR) programme identifies those scheduled sites that are most at risk of being lost as a result of neglect, decay or inappropriate development. It includes two sites in Stoke Climsland Parish [see below]. The Cornish Buildings Group also maintain a register of historic buildings at risk which is more extensive and includes non-designated assets. A request to access the CBG Register has been made and any details of buildings at risk in the Parish will be added to a later version of this report.

FIGURE 4: HERITAGE AT RISK [Source: Heritage at Risk Register, Historic England].

Site Description	Location Map
<p>New Consols Mine: surface, buried and underground remains, Lucket</p> <p>Heritage Category: Scheduled Monument</p> <p>List Entry Number: 1409595</p> <p>Assessment Type: Archaeology</p> <p>Condition: Generally unsatisfactory with major localised problems</p> <p>Principal Vulnerability: Collapse</p> <p>Trend: Declining</p> <p>Ownership: Charity (heritage)</p> <p>Designation: Scheduled Monument, 5 LBs, part in CA, WHS</p>	

Holmbush Mine: Windsor Lane rotative engine house with adjacent boiler house, loadings and platform

Heritage Category: Scheduled Monument

List Entry Number: 1020327

Condition: Very bad

Occupancy / Use: Vacant/not in use

Priority: B - Immediate risk of further rapid deterioration or loss of fabric; solution agreed but not yet implemented

Previous Priority: B

Ownership: Crown

Designation: Scheduled Monument, LB grade II, WHS

This is a substantial mine engine house in deteriorating condition. The building is densely covered in ivy and surrounded by trees. The roof is mostly collapsed but still retains a few slates and roof timbers which are vulnerable to further damage. Timber fittings are deteriorated and rotten. Arched window openings have slipped bricks.



Part Two - Appraisal

2.16 This section seeks to explain how the structures, agricultural field patterns and settlement distribution, landscape and townscape features, buildings and placenames that contribute to the distinctive character that is enjoyed and valued so much today have been shaped over time by intensive human settlement and activity from the earliest times. It identifies those historical aspects that it is important to take into account and conserve when new development is being designed and planning decisions are being made. In so doing it gives clues as to the factors which should be reflected in the NDP's policies.

General Historical Context

2.17 **Geological History.** During the Carboniferous and Devonian periods, most of what is now Cornwall lay beneath the sea during which time sedimentary material was laid down on the seabed. At the end of the Carboniferous period, the cataclysmic collision of two landmasses, one southern, one northern, known to geologists as the 'Variscan orogeny', threw this material up into a mountain range. Some 10 million years later a huge mass of molten granite [the 'Cornubian batholith'] welled up in a line running from Dartmoor to the Isles of Scilly, pushing up the sedimentary material. In so doing it gave rise to extensive metamorphism and mineralisation, which created extensive seams, or 'lodes', of tin and copper, iron and in a few places, gold. Over the next 300 million years erosion of the sedimentary rocks laid bare the granite 'plutons' and created the topography we recognise today, including Dartmoor, Bodmin Moor, St Austell Moor and Wendron Moor, the Lands' end Peninsula the Isles of Scilly and locally the prominent

Kit Hill/Hingston Down at the south of the modern Parish. It also exposed the mineralised areas that later provided the basis for much of Cornwall's and Stoke Climsland Parish's economic and social growth, particularly in the post medieval period.

- 2.18 **Prehistoric and Romano-British Period.** Evidence of the earliest human presence in the Parish has been found on Kit Hill, in the form of long Barrow and arrow head 'find' on the south east slopes of the hill, that are Neolithic [4000 BC to 2501 BC]. Possibly itinerant tribes roamed the area, gradually settling around ritual sites, which they gradually cleared and settled forming an early farming population scattered across the countryside, evidenced by the 20 Bronze Age [2500 BC to 800 BC] barrows, some Bronze Age enclosures and co-axial field boundaries scattered around Kit Hill, and also possible Barrows at Row Down. It is likely that the Tamar, navigable by small boats well inland from the sea, brought trade and cultural mixing to the area.
- 2.19 Over many years the early tribes were replaced by the Celts, or Dumnonii, culturally related to Armorica (now Brittany). The Dumnonian kingdom appears to have been an alliance of petty kings, seated in various hillforts dotted across the Cornish landscape. Locally the population probably fell under the purview of the Iron Age (800 BC to 1 AD) hillforts on the north facing spur summit of Greenscombe Hill, in a strategic position above the bend of River Tamar and very steep stream valleys either side, or Carthamartha further upstream.
- 2.20 During the Late Iron Age (from c400BC onwards) enclosed settlements, known in Cornwall as rounds, were built throughout Cornwall, their use continuing into the Romano-British period (AD49 to AD410). Interpreted by archaeologists as farming hamlets, their distribution avoids the more exposed areas of the upland ground, and the damp low-lying areas of valley bottoms. Evidence of settlement mounds has been found at 9 locations across the Parish, including Lockett and Middle Hampt. Such rounds were often surrounded by extensive field systems, remnant in the medieval field patterns present in the Parish.
- 2.21 **The Dark Age.** After the Roman departure c.410AD the Dumnonian Celtic culture flourished, but later power in the kingdom may have become fragmented and unruly, falling gradually into the so-called 'Dark Age'. It came into conflict with the Wessex Saxons who were infiltrating gradually westwards. After various battles the Saxon influence grew, and after a settlement imposed by King Athelstan of Wessex in 936 AD Dumnonian Cornwall became a distinct region within the English state, such that the area of Stoke Climsland was probably under some degree of Anglo-Saxon control, and their administrative system was gradually acquired, with land being held by possession in return for service rather than through domination and ownership, and with a highly structured legal system. The Celtic 'Keverang' administrative areas became 'hundreds' within which there were 'manors', themselves a distant echo of the Roman villa system. Modern Stoke Climsland Parish is in the area of the Hundred of East Wivelshire
- 2.22 Manors were controlled by a high-status individual, known as the 'Lord of the Manor', usually holding his position in return for undertakings offered to a higher lord, and consisted of landholdings worked by the lords' tied-men, serfs, and freemen, generally in the form of strip fields clustered around a defensible central house (which was also where the Manorial court would be held).
- 2.23 **Medieval.** Following the Norman invasion, the Anglo-Saxon elite were replaced by the Norman elite and power became even more centralised. King William adopted and extended the Manorialism model of

control and firmly establishing a feudal economy¹. As that developed in depth it shaped much of the rural Parish we know today. The settlement pattern became established and farming systems evolved which influenced the shape of the landscape still strongly legible in much of the Parish.

2.24 Post-Medieval. In the late 18th century and 19th century enclosure of the remaining ‘wastes’ further extended the agricultural economy, with the River Tamar becoming increasingly important as an artery of trade, particularly of fruit grown in the many valleyside orchards. The development of mining at several locations across the Parish, firstly for tin, then for copper and arsenic, brought rapid growth, settlement expansion. Civil society, in which state, community and church played complementary roles emerged, as seen in the ‘churchtown’ clustering around Stoke Climsland Church.

Stoke Climsland and Venterdon.

2.25 Historic Context. The area was in the estates of the Abbey of Tavistock in Saxon times, and later the Earls of Cornwall. The manor of Climson was recorded in the Domesday Book in 1087. Stoke Climsland church was built close to the west of the manor house in the 13th Century on a prominent hillside site. The new church gradually became the focal point of the manor, and a medieval settlement developed around it. The Manor of Stoke Climsland became part of the Duchy estate when the Duchy of Cornwall was established by Edward III in 1337. To the west of Stoke Climsland was Whiteford estate, the site of a large new mansion built in 1775 by Sir John Call, and a surrounding park including a boating lake and Palladian bridges, and the parkland and some garden structures (including The Temple, once used for banquets) survive from that era. The estate was acquired by the Duchy in 1879 and the Mansion demolished in 1912 to make way for Duchy Home Farm, a model farm, in 1913.

¹ William ‘owned’ the land, and loaned out parcels of land (fiefs) to nobles (vassals) who in return gave military service when required, such as to garrison castles. Not necessarily giving service in person, a Noble had to provide several knights depending on the size of the fief. Over time the military service commitment of the Nobels was commuted to money payments, which became the norm. The Noble could have free peasants or serfs (aka villeins, actually slaves) to work his lands, and he kept the proceeds of that labour. If a Noble had a large estate, he could rent it out as a tenant-in-chief to a lesser Noble who, in turn, gave military service, and had peasants work that land for him, thus creating an elaborate hierarchy of land ownership. For administrative purposes, estates were divided into ‘Manors’, the smallest piece of land which could support a knight, his family and retinue. A powerful lord could control many hundreds of manors, either in the same place or in different locations.

Each manor’s knight was ‘Lord of the Manor’, under whom were various classes that worked his land [the ‘demesne’] and sustained themselves by also working a ‘tenement’ or small plot of land loaned to them by their lord. These were villagers and freemen [around 40% of households, holding on average 30 acres of land, and two oxen for ploughing], smallholders and cottagers: [around 35% of households, with about 5 acres of land on average and might have had a share in the villagers’ plough teams], and slaves [around 10% of households, who had no land, belonged to the lord, and may have been used as ploughmen and servants]. The ‘Lord’s Waste’ was land available as common pasture for his animals and those of his tenants, or left as common pasture and wasteland. Land given over to the Church for the support of Clergy was known as the Glebe. The villagers were bonded tenants who could not leave the land without the landowner’s consent, whilst the freeman held land by deed and paid a fixed money rent. After centuries in which the rent remained unchanged while its value fell, such rents were nominal. Such tenements could be hereditary.

Following William’s policy of carving up estates and redistributing them, manorialism became much more widespread in England. In Cornwall the situation was probably much looser than that to the east, with fewer labour services, more money rents and greater freedom of decision-making for tenants. All tenants had to attend the manorial court, held usually in the manor house to deal with the tenants’ rights and duties, changes of occupancy, and disputes between tenants. Place names ending in ‘Court’ are reminders of those days. The Lord of the Manor or his representative presided. As it became usual for the villein to be given a copy of the entry in the court roll relating to his holding, such a tenure became known as ‘copyhold’.

Not all manors had a resident lord. A lord who held several manors might choose to live in one and place a resident bailiff in charge of each of the others. Or the demesne farm could be let on a leasehold. In either case a chief house for the manor would still be needed, but it might be known as the ‘barton’, ‘grange’ or ‘manor farm’. The manorial lord not only built the manor house, but frequently founded a church beside it or chapel within it.

- 2.26 Stoke Climsland became an important point on the main Callington Turnpike Trust route of 1785 to Bealsmill, where it joined the Launceston turnpike road, as indicated by the presence of the former Half Moon Inn (now Hillside) and granite milestones along the road through the village.
- 2.27 During WW1 and after, the village became a focus for regeneration work led by the Duchy and later Canon Martin Andrews, who occupied Pendragon House (the old Rectory). This work included a new village hall, housing for Duchy Home Farm workers, and a Flower Farm.

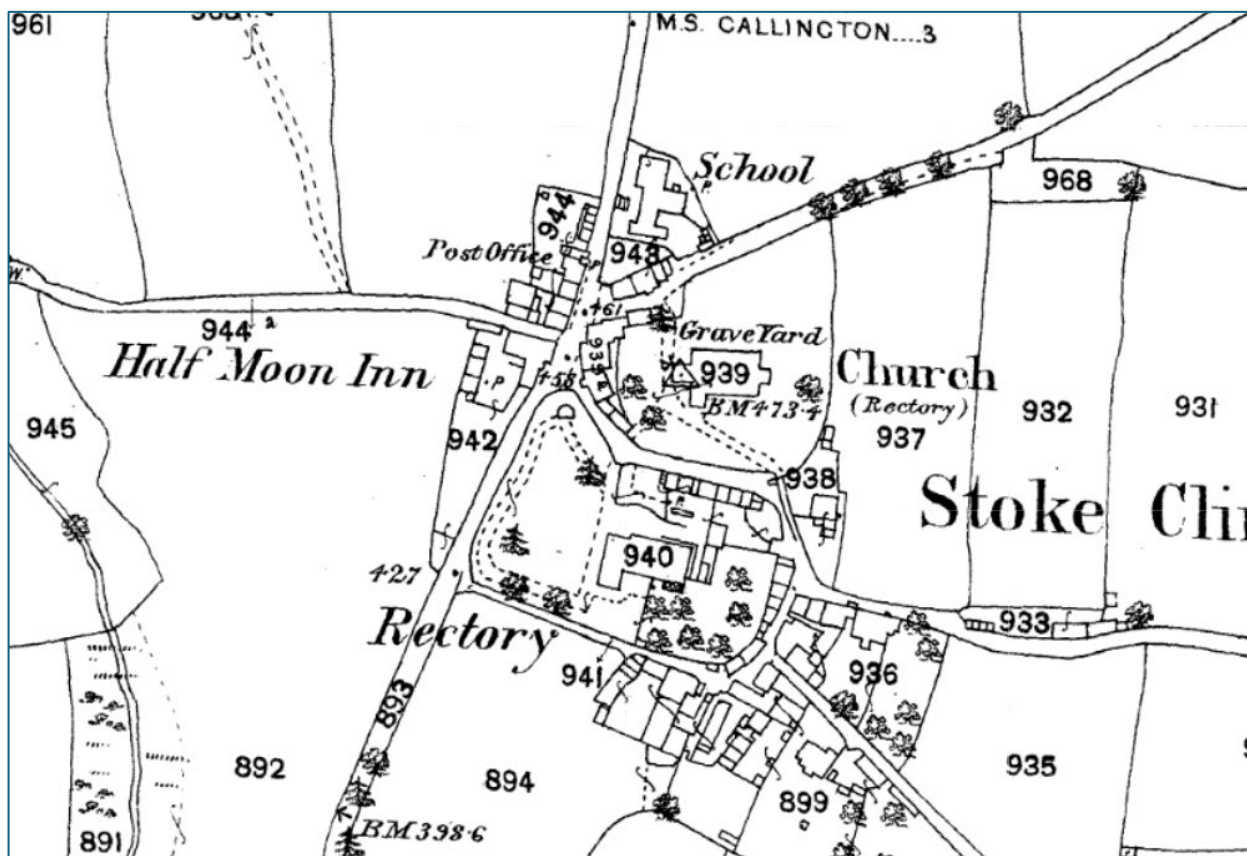


FIGURE 5: STOKE CLIMSLAND, 1875 to 1901 OS MAP EXTRACT.

- 2.28 At Venterdon, a small medieval hamlet is set around the former smithy that was to become Dingles Yard, famous repairing steam traction engines since their introduction into Cornwall in the mid C19, including agricultural and road repairing engines. The yard stopped operating in c1974 and a large forge is still in situ is all that survives of Dingles Yard
- 2.29 **The Historic Core** of the settlement is focused around the crossroads fronting the Parish Church and the area of Higher and Lower Town. It is in this 'Church town' area that the village's listed buildings are concentrated. These date from the mid 17th to mid 19th Century, with the exception of the Church and structures in the Churchyard, which originate as early as 13th century but have been heavily modified at various times, and the Village Hall, which is early 20th century.

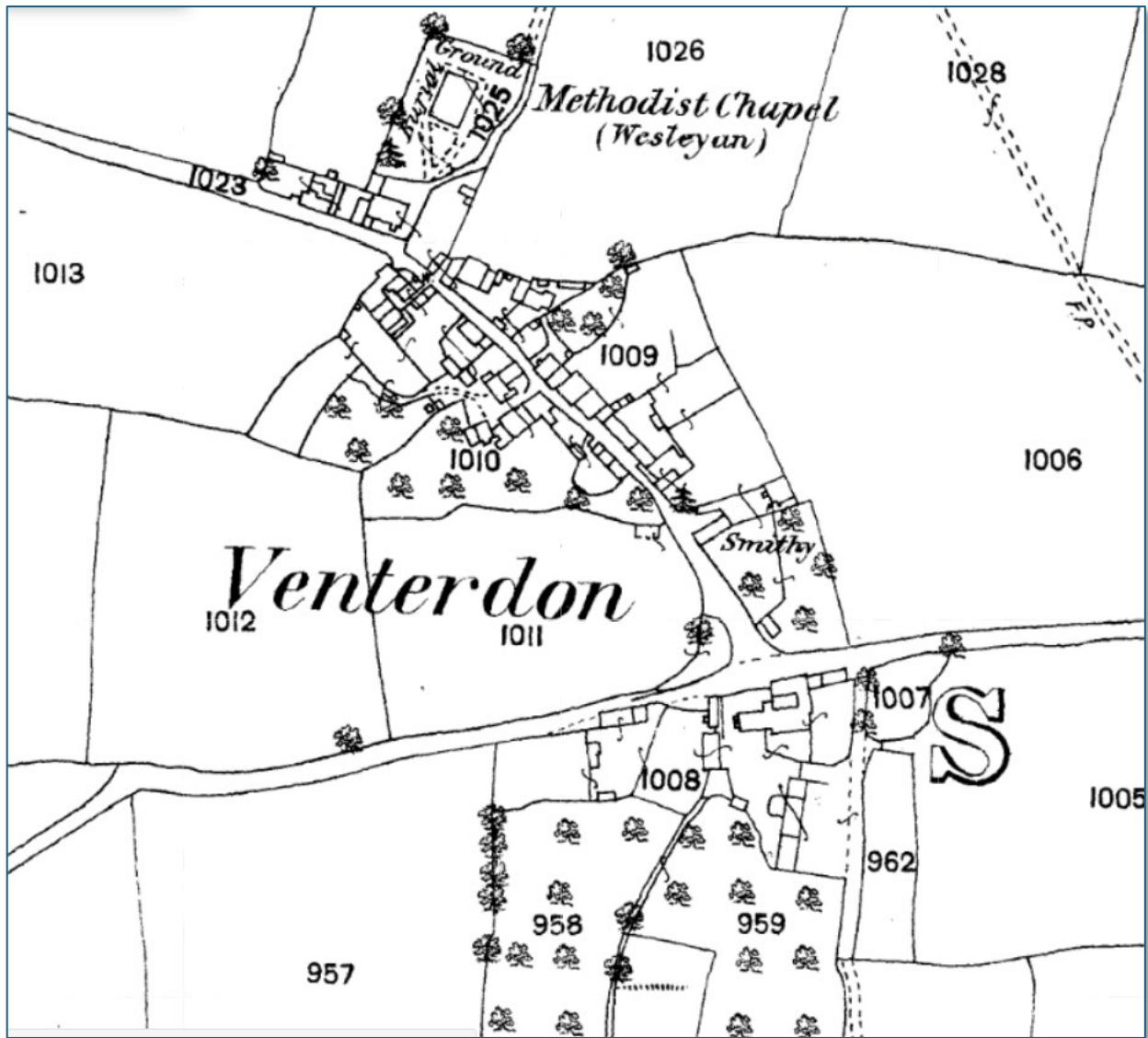


FIGURE 6: VENTERDON, 1875 to 1901 OS MAP EXTRACT.

- 2.30 The village centre and Higher and Lower Town, and in particular the church tower, is visible atop the rising plateau from some distance. The principal approach into the village from the south leads uphill past Whiteford Park and through a tree canopied section of road past the old Rectory. Arriving in the centre, the initial view is of the Sports Club with the War Memorial and the tall bellcote gable of the Old School immediately beyond. Looking back, Whiteford Temple is a landmark feature on the hillside. The road opens up into a central space at the junction of several minor roads, where the scene is overlooked by the granite tower of All Saints Parish Church on the east side. The church is in an elevated position typical of 'patronage' sites surrounded by stone walls with granite copings. Much of this part of the village has high walls and hedges and narrow sinuous lanes, following mediaeval plots, with cottages fronting directly on to them in many places, which provide a strong sense of enclosure and intimacy.
- 2.31 Buildings generally have a consistency of style and form, being mainly terraced cottages and villas, with some converted agricultural buildings. The former mainly have a central entrance (now sometimes enclosed in a modern porch) flanked by reception windows, with two or three symmetrically positioned window openings at 1st floor. Walls are mainly slatestone random rubble in narrow rough courses. Colours vary depending on which local quarry was the source of the stone. There are some with granite quoins, string courses, sills, gate piers and wall copings. Many properties have been painted white or

cream or lime rendered to lighten what might otherwise be a sombre character. Dark Delabole rag slate on simple gabled roofs dominate, frequently with contrasting ridge tiles. The Sports and Social Club is unusual in having a hipped roof at first floor level. Dormers are scarce, but those that exist are proportionate traditional pitch gabled roof form set above eaves level below the ridgeline, with blind cheeks. Windows often have massive granite lintels, others with red-brick top dressing. Where traditional casement and sash windows remain, they are 12, 16 and 20 panes. Chimneys are predominantly brick (ornate on the Post Office building) and some built up from earlier stone stacks. Many chimneys are relatively tall. Angled slates are sometimes used in place of pots.

- 2.32 At Venterdon there are early post-medieval remains and evidence of a well, a cider mill, and horse engine house, plus a smithy. The presence of these features add to documentary evidence that Venterdon is medieval in origin, dating from 1303, and the place name combines the Cornish 'fenten' meaning 'spring, well' and the English "hill".
- 2.33 **Post WW1 Expansion.** On the road leading north out of the village is the village hall. This LB II is of architectural interest for its design by Richardson & Gill, in a classical interpretation of the local vernacular design clearly influenced by Lutyens. It also has historical interest because of its origins with the Duchy's post WW1 planned programme of social improvements around Stoke Climsland. Beyond that the later Duchy Cottages and The Green are important historical element in the northern approach to the village centre being a planned set of rural artisans' cottages built around a new village green. The form and materials of Duchy Cottages are less typical of the area as a whole. Built in 8 pairs, they are reminiscent of the 'garden suburb' ethos of the time, set in a rural context, with two or three slightly different house types. The roofs are steeply pitched and swept down to a side or rear porch and are covered in plain brown clay tiles or red pantiles They have substantial chimneys mostly of brick; some have been rendered. The house walls are rendered, and some have weather boarded gables. Simple post and rail fences surround the gardens. The original window style is 3 or 4-light casements with horizontal glazing bars, but many have been marred by modern replacements. Canon Andrew's Flower Farm site is located some 130m east of the village on the south side of the road to Climson.
- 2.34 **Modern Expansion.** The early 1960's saw the completion of local authority housing at Trevendon at Venterdon followed by private housing at Dingle Close in the 1970's. Opposite the Green and to the north of the Old School is Kyl Cober Parc, an area of modern housing started in the 1980's and completed this century, which included a mixture of private and District Council housing. Only the northern part of it is visible from the Conservation Area. A good approach to the design of most of these modern properties has been taken, and they reflect the vernacular quite well. A concern may be that future extensions and repairs to the properties may introduce less sensitive treatments. This period also saw the construction by the Duchy of small industrial units within the settlement. At nearby Venterdon the former site of Dingles Yard and Smithy was developed in the 1980s, its heritage being remembered in the names of the two small streets Dingle Close and Anvil Court.
- 2.35 There are some areas where there is scope for the NDP to offer or encourage enhancement, including:
- Guidelines on the design of new buildings, extensions and repairs.
 - The co-operation of statutory undertakers to reduce the impact of overhead lines.

Luckett.

- 2.36 **Historic Context.** The area around Luckett is one of ancient settlement with evidence of an Iron Age fort, a 'round' and prehistoric fields in woods to the east of the village. In the Medieval period most of the land in the area was held by the Duchy of Cornwall and Luckett was part of the manor of Stoke Climsland. In the 13th century a Royal Deer Park (Carrybullock) of some 250 hectares was established,

remaining in use until it was eventually dis-parked during the reign of Henry VIII. The old use of the land is reflected in the name of the present Deer Park Farm, and some features of the park are still visible, including the keeper's lodge site.

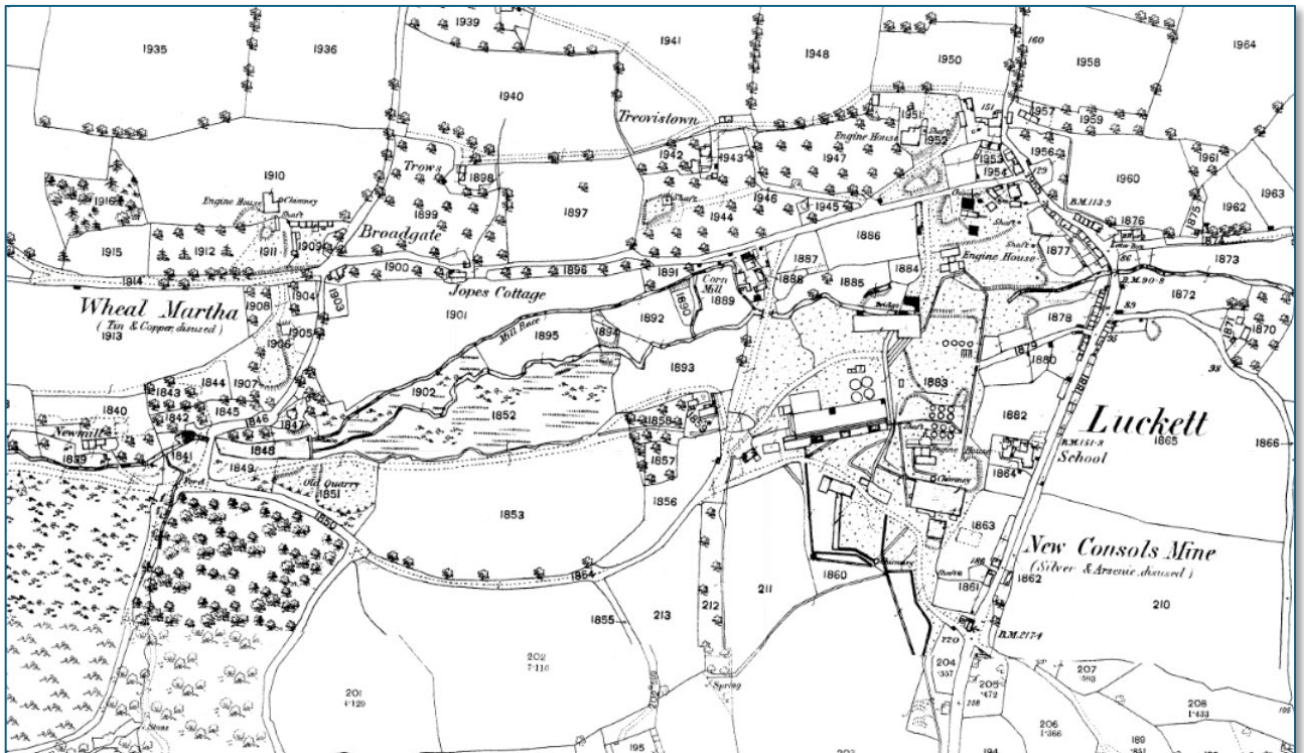


FIGURE 7: LUCKETT, 1875 to 1901 OS MAP EXTRACT.

- 2.37 Lockett village originates from the medieval settlement of Trelane (1337) slightly north of the current village centre and later Lockett itself was established at the ford crossing the river (1554), beyond the north-eastern edge of the Deer Park. Tin streaming in the valley probably took place from the late Medieval period. The development of mining, firstly for tin, then for copper and arsenic with some silver and gold, brought rapid growth and many new small cottages to the scene, infilling into the original medieval settlement pattern.
- 2.38 **The Historic Core** of the settlement is focused around the river crossing, which lies at the bottom of steep approach roads from north and south. Trees, hedges, roadside fronting properties and walls give a sense of enclosure and intimate scale. On the south side of the approach to the village are the only two unaltered 19th century miner's cottages remaining in Cornwall. These grade II LBs are owned by the East Cornwall Mining History Association which plans to restore them, but they remain on the Historic England Heritage at Risk Register at the time of writing. They feature many characteristics that are shared with other properties in the locality: course slatestone rubble walls, rag slate roofs, flat stone window arches, etc. Close by the bridge is a cluster of small cottages, in short terraces, some of which have been amalgamated into single dwellings. Clematis and Penleat Cottages are set down at a low level, indicative of the original ford level prior to the construction of the stone bridge in the late 18th/early 19th century. Later buildings reflect the subsequently higher level of the carriageway. East of the bridge, low lying meadow land includes a gravelled car park and village common area. This creates a sense of focus for the village and is an important local green space therefore. However, its establishment has resulted in the loss of some of the meadow character of the south side of the leat at this point. On the north bank, a prominent row of mid-19th century cottages face across a green lane towards a meadow. The name of Maltzer Cottage, closest to the main street, reflects its earlier life as a

public house. A footpath from here leads to Horsebridge leads across a large wetland meadow bordering the River Tamar where there is evidence of ancient mining activity, and to allotment gardens. Thereafter the main street ascends steeply out of the village with the placed hard on the roadside, creating a strong sense of enclosure. Lockett Social Club has a plain rendered frontage, dominated by the tall facade of the former Miner's Lodge with its untypical wood cladding at first floor level. Both are an important element of the village's mining heritage. The former Lockett Stores, now closed, are on the left whilst ascending, after which is the former mine Count House for the New Consols Mine, the 'sett' for which dominates the area to the west of the village. Former engine houses and aerial cableway structures are present.

- 2.39 Buildings generally have a consistency of style and form, being mainly terraced cottages, former farmhouses, and villas, with some converted mining and agricultural buildings. Rough slate ragstone walls predominate, with simple rag slated gable roofs, often with chimney stacks on the gable walls, and some hipped roofs. Granite quoins are present on many, whilst windows are a mix of casement and sliding sash, with 4, 12 and 16 panes, the openings topped with semi arched slatestone or red brick dressings. Typically many buildings have been rough rendered or painted white and cream.
- 2.40 **New Consols Mine.** The large area of former mineral workings behind the village on its west side - about 10 hectares, has great heritage significance: mining of copper, silver, tin and arsenic progressed in the C19 at Great Wheal Martha (1844-1857), New Great Consols Mining Company (1857-1867), New Consols Tin and Arsenic Works (1867-1874) and New Great Consols Silver and Arsenic Works (1874-1877). The mine then ceased to operate until some working during WW1 and was then reopened in 1946 by New Consols but finally closed in 1953. It is thus both a Scheduled Ancient Monument and part of the World Heritage Site. A significant number of mine buildings survive including engine houses, chimneys and arsenic calciners, the remains of which are sufficiently intact to help build up the picture of the intensive mining activity of the past. Earlier 19th century structures are mostly of slatestone, granite and brick, whilst concrete block structures illustrate the last phase of activity in the 1950's. The mine area is now owned by Lockett Heritage Community Interest Company the objectives of which are the preservation of the existing mine buildings and conservation and evolution of the site as a natural habitat. However area remains on the Historic England Heritage at Risk Register at the time of writing. The area is well used by local people as a recreational resource.

Downgate

- 2.41 The Historic Core of Downgate is formed by about a dozen dwellings spaced along the main spine road at Lower Downgate, now with many modern dwellings interspersed and ribbon development leading up towards Higher Downgate and in depth along Holmbush Hill/Southcoombe Lane, and High Trip Lane. Higher Downgate, originally a terrace of cottages, is now a limb of ribbon development running south from the crossroads at Parkhill. Mostly comprising 19th Century and Edwardian properties, with typical architectural design and features for the Parish, although many now substantially altered. Some of the infill development has paid little regard to the vernacular, and there is much use of plastic windows in an incorrect pattern.

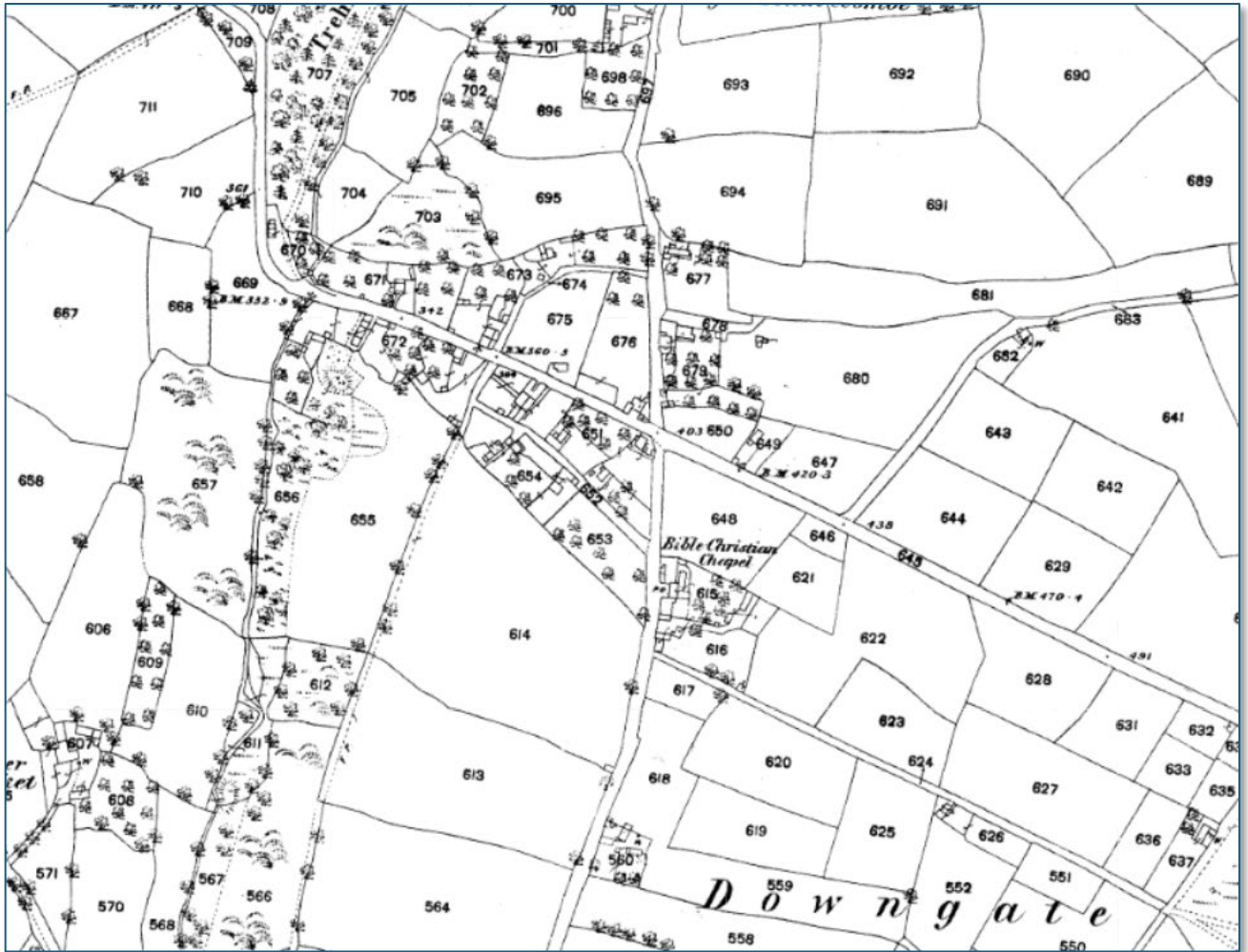


FIGURE : DOWNGATE, 1875 to 1901 OS MAP EXTRACT.

Kelly Bray

2.42 This village is mainly located in the neighbouring parish of Callington. However, there are several buildings of note just over the boundary in Stoke Climsland in the Holmbush area identified in the Kelly Bray statement of the Cornwall Industrial Settlements Initiative. These include some 16 buildings and structures identified in the CISI report in its gazetteer and Figure 4a as ‘Other Significant Buildings’ (Nos 70 to 86) mostly associated with the former Holmbush Mine and its supporting community and infrastructure.

Bray Shop

2.43 Most of Bray Shop is in the adjoining Parish of South Hill. That part which is in Stoke Climsland Parish is mostly modern, apart from Tremollet Cottages and Heatherdown, which are prior to 1883, and the Bible Christian Chapel. The Cottages retain some attractive slate hung facades, but modern window insertions, porches and replacement chimneys detract. Heatherdown is an attractive slate hung farmhouse/villa in traditional style. The Chapel has been pleasantly converted to residential, with the original window openings retained, and some effort has been made to insert replacement glazing.

References:

1883 OS 25” map.

<https://maps.nls.uk/view/105992782#zoom=4&lat=6575&lon=7327&layers=BT>

1905 OS 25” map.

<https://maps.nls.uk/view/105992785>

Stoke Climsland Conservation Area Statement:

https://www.cornwall.gov.uk/media/3638347/Stoke_Climsland_CA_Statement.pdf

Lucket Conservation Area Statement:

https://www.cornwall.gov.uk/media/3638339/Luckett_CA_Statement.pdf

Kelly Bray CISI Report: <https://www.cornwall.gov.uk/media/28974770/kelly-bray.pdf>

Design

- 2.44 The design of buildings has in the past been influenced by factors such as the local availability of construction materials, the technology of the times, social conditions, needs and functional roles, and the traditional skills (and ability) of the builders. This has imparted the locally distinctive architectural style and the pattern and layout of development at the centre of our villages and in many older traditional buildings built up to Edwardian times, that is now highly valued. Also the customs and practices of the local population over time can create special places and designs that are uniquely local.
- 2.45 To create successful places, that are representative of the people that live there, settlements must therefore evoke a “sense of place” the unique qualities of settlement character which has evolved slowly over centuries, as a coalescence of everyday practices, shaped by people and place. Unfortunately, much modern design and detailing is based around widely standardised techniques, regulations and materials that when applied without consideration of the local context can seriously harm the essential ‘sense of place’ that pervades a settlement. The appraisal given in the preceding section demonstrates that the Parish Stoke Climsland is not immune from this form of change.
- 2.46 It is therefore important that full account is taken of the local context in the design of new development so that it responds to and enhances our local “sense of place” and meets the expectations of people already living in the area. There is a need to ensure that, when new development proposals come forward, however small scale, they should contribute to the maintenance of this local distinctiveness, reflecting local building traditions and where possible reversing any harm that has occurred from the use of inappropriate designs and materials. To fit in well and be good neighbours to adjoining buildings and their occupants, the proportions and positioning of new buildings should be informed by and consistent with the scale and character of the surrounding area, reflecting the curtilage, scale, net density and roofline of adjacent buildings, the streetscape, its historic street-lines and established/traditional building line practice.
- 2.47 This does not mean that new development should copy or recreate buildings from the past, but the design must demonstrate a firm understanding of the principal aspects of settlement character and express this through the architectural style and material specification of new buildings, this is what is referred to as design lineage.

3. Related Community Engagement Feedback

3.1 The most important contributors to local quality of life included the following:

Stoke Climsland Conservation Area	3.59
Parish heritage and historic environment	3.58
Luckett Conservation Area	3.27

3.2 When asked ‘where in our local area would you take a visitor to see a heritage site’ the only location in the Parish mentioned was Kit Hill. There were also several comments that indicated respondents were either unsure what a local heritage site would be, could not chose or had no interest in heritage.

3.3 Comments were made calling for the conservation of traditional architecture but others that countered this view in terms of modern perhaps being ‘better’. When asked about their importance respondents rated design and conservation quite highly:

Topic	Weighted Average
Encouraging appropriate and good housing design	4.35
Preserving Conservation Areas	4.23
Conserving local and World Mining Heritage sites	3.97
Controlling the size of new houses	3.74

3.4 In the 2024 community engagement ‘refresh’, protecting environmental assets, including heritage, was the top response:

	Extremely important	Very important	Somewhat important	Not so important	Not at all important	Weighted Average
Protect our countryside, landscape, green spaces and heritage.	39	6	1	0	1	4.74

4. Key issues and implications for the NDP

- National and local policy is that Planning should:
 - contribute to and enhance the natural and historic environment
 - ensure that developments function well, are visually attractive, are sympathetic to local character and history, allow an appropriate amount and mix, and create places that are safe, inclusive and healthy
 - not permit development of poor design
 - give great weight to outstanding or innovative designs which promote sustainability or help raise the standard of design more generally in the area
 - give great weight to the conservation of designated heritage assets (which include Listed Buildings and Conservation Areas),
 - take a balanced judgement on the scale of harm to the significance of non-designated heritage assets

- seek opportunities for new development in WHS and the settings of heritage assets to enhance or better reveal their significance
- Treat loss of a WHS asset which makes a positive contribution to its significance as substantial or less than substantial harm
- Numerous features and areas of historic environment interest and archaeological heritage are present in the parish, including many listed buildings and scheduled monuments, and a large tract of the Cornish Mining World Heritage Site.
- There are also many non-designated historic assets that contribute to the character of the area and may be at risk of loss or serious unsympathetic alteration.
- There are areas of historic ‘Buildings at Risk’ that require interventions.
- The setting of the many listed building and the general character of the Conservation Area villages is attractive but, in some places, harm has been caused through new development and extensions.
- For example, windows and doors marred by modern replacements whilst some of the infill development has paid little regard to the vernacular.
- A concern may be that future extensions and repairs to the properties may introduce less sensitive treatments.

Implication for the Neighbourhood Development Plan

- **National and local planning policies are sufficient to protect listed heritage assets and no local policy is needed in the Stoke Climsland NDP.**
- **However, consideration should be given to the inclusion of policy guidance on development that has potential impacts on non-designated historic assets that are not formally listed. [including in the WHS].**
- **A local NDP policy to supplement Local Plan policy 23 should be considered for development within and close to the two Conservation Areas.**
- **There are some areas where there is scope for the NDP to set guidelines and/or encourage enhancement, including:**
 - **Policy criteria on the design of new buildings, extensions and repairs to help ensure that the historic character of the Parish is maintained.**
 - **Support for the appropriate repair, enhancement, reuse and management of historic assets.**
 - **The co-operation of statutory undertakers to reduce the impact of overhead lines where appropriate.**
 - **Guidelines on the protection and treatment of the Lockett car park and associated meadow.**
- **Place names should be identified as a ‘clue’ to the need for heritage impact assessment.**

APPENDIX 1: NON-DESIGNATED HERITAGE ASSETS, STOKE CLIMSLAND PARISH

Part A: Extant features.

Name	Reference	Period	Summary
ALREN - Early Medieval hollow way	MCO29663	Early Medieval	A 400m length of trackway.
ALREN - Medieval settlement	MCO13261	Medieval	The settlement of Alren is first recorded in 1337 and part Alren Farm still survives and is occupied. A part of the settlement to the SE was demolished in 1968-9.
ALREN - Medieval settlement, Medieval field system, Medieval streamworks, Post Medieval leat, Post Medieval brickworks	MCO13262	Early Medieval	Crop marks and slight earthworks visible on aerial photographs could be the remains of a shrunken settlement.
ALREN - Modern bone mill	MCO29460	Modern	A bone mill is recorded at Alren on the 1st Edition 6" OS map c1880.
ALREN - Modern saw mill	MCO29461	Modern	Whiteford sawmills at Alren.
ALREN - Modern settlement	MCO47519	Modern	A farm building to the east of Alren Farm were demolished in 1968-9 by the Duchy.
ALREN - Post Medieval brickworks	MCO47584	Post Medieval	The field name "Homeword Brick Meadow" is recorded in the Tithe Award c1842.
ALREN - Post Medieval butter well	MCO47520	Post Medieval	A purpose built C19 butter well/cool house survives at Alren.
ALREN - Post Medieval tannery	MCO29467	Post Medieval	A "Tanyard" is recoded in the Tithe Award c1842 at Aldren.
ALSTON - Medieval settlement	MCO13265	Medieval	The settlement of Alston is first recorded in 1331.
BEALS - Post Medieval findspot	MCO47209	Post Medieval	A small single C17 moulded granite window is visible at first floor level in the north gable end of Beal farmhouse.
BEALS - Post Medieval horse engine house	MCO47210	Post Medieval	A horse engine house was sited on the southern gable end of a bank barn at Beals.
BEALSMILL - Medieval well	MCO47212	Medieval	A roadside well with granite side jambs and a wooden door is an old siting for a community well.
BEALSMILL - Post Medieval barn	MCO47194	Post Medieval	A small field barn survives east of Bealsmill. It is a stone rubble construction with a slate roof.
BEALSMILL - Post Medieval boundary stone	MCO55428	Post Medieval	A rare boundary stone which marks the limit of the Callington Turnpike trust as well as marking the southern limit of Bealsmill as a county bridge, similar to the stone to the north (MCO55427).

BEALSMILL - Post Medieval corn mill	MCO23410	Post Medieval	John Bile kept Beals Mill in 1388. A mill survives on the site, but the state and condition of the mill is unrecorded.
BEALSMILL - Post Medieval leat	MCO29647	Post Medieval	The leat at Bealsmill (6972) is visible as a ditch and two banks, 830m long, on aerial photographs
BEALSMILL - Post Medieval toll house	MCO55426	Post Medieval	A property named "Toll House" is probably associated with Callington Turnpike Trust, built between 1827 and c1840, as the building is recorded on the Tithe Map c1840 and still survives.
BEALSMILL BRIDGE - Medieval bridge	MCO9499	Medieval	Bealsmill Bridge is probably mid to late C18, partly rebuilt in mid 19 and C20. It is on the site of a bridge dating to at least 1388.
BEDLAKE - Post Medieval farmstead	MCO47098	Post Medieval	The tenement of Bedlake is recorded by Martyn in c1748.
BIRCHENHEAD - Post Medieval settlement	MCO47234	Post Medieval	An area of earthworks and building platforms is all that survives of the deserted settlement of Birchenhead, east of Goosewell.
BRAY SHOP - Post Medieval nonconformist chapel	MCO32038	Post Medieval	A late C19 simple Gothic style Methodist chapel and attached schoolroom.
BRAY SHOP - Post Medieval quarry	MCO29660	Post Medieval	A small quarry and associated spoil tip are visible on aerial photographs.
BRAY SHOP - Undated field boundary, Undated enclosure	MCO21449	Undated	An earth bank is visible on aerial photographs.
BRIDGE FARM - Early Medieval field system, Medieval field system	MCO20668	Early Medieval	Two lynchets at this location are visible as low earth banks on aerial photographs.
BRIDGE FARM - Medieval settlement	MCO13593	Medieval	The settlement of Bridge Farm is first recorded in 1337.
BRIDGE FARM - Post Medieval findspot, Post Medieval water wheel, Post Medieval wheel pit, Post Medieval mill pond, Modern mill house	MCO47414	Post Medieval	A millpond and waterwheel survive at Bridge Farm. The mill survives as a roofed building.
BRIDGE FARM - Post Medieval quarry, Undated enclosure	MCO21451	Post Medieval	An oval shaped enclosure or platform measuring 35m by 15m is visible as a slight earth bank on aerial photographs.
BRIDGE FARM - Post Medieval streamworks	MCO47412	Post Medieval	Possible site of a streamworks, south of Bridge Farm.
BROADGATE - C20 fingerpost	MCO57731	Modern	A short cast iron fingerpost survives on the NW side of an unclassified road junction at Broadgate, west of Lockett.
BROADGATE - Medieval settlement	MCO13604	Medieval	The settlement of Broadgate is first recorded in 1345.
BROADGATE - Post Medieval engine house	MCO52735	Post Medieval	Engine house situated on the site of Broadgate, which had a pumping engine.

BROADGATE - Post Medieval horse trough	MCO47479	Post Medieval	A granite cut water shute and drinking trough, probably for local use survives south east of Newmills.
BROADGATE - Post Medieval mine	MCO11892	Post Medieval	Broadgate Mine has been worked for copper since 1764 and was later included in the New Consols Group.
BROADGATE - Post Medieval water wheel	MCO29465	Post Medieval	A water wheel is recorded at Broadgate on Symons' map c1848.
BURRATON - Medieval chapel, Post Medieval chapel	MCO9839	Medieval	The field-name 'Chapel Molsters' suggests the site of a chapel but there are no remains.
BURRATON - Post Medieval findspot, Post Medieval cider mill	MCO47680	Post Medieval	The cider house contained probably its original stone floor, parts of the cider press and the millstones are located in front of the house.
BURRATON - Post Medieval quarry, Post Medieval spoil heap	MCO39599	Post Medieval	A spoil tips is visible on air photographs
BURRATON - Post Medieval settlement	MCO47682	Post Medieval	Areas of earthworks is all that survives of buildings suggesting the settlement has shrunk.
BURRATON - Post Medieval stable	MCO47681	Post Medieval	A C19 stable block with half hipped slate roof survives. The stable stalls and internal woodwork seem original.
BURROWS - Early Medieval field system, Medieval field system	MCO39903	Early Medieval	A series of field boundaries is visible as crop mark banks on air photographs
BURROWS - Medieval settlement	MCO13659	Medieval	The settlement of Burrows is first recorded in 1520.
BURROWS - Medieval settlement, Post Medieval mine	MCO47207	Medieval	An area of earthworks near the present farm settlement of Burrows consists of two late medieval cottages with a few small farm buildings and building platform. Also there is an area of earthworks more associated with mine working.
BURWELL - Medieval settlement	MCO13662	Medieval	The settlement of Burwell is first recorded in 1337.
CAMELOT - Post Medieval milestone	MCO49111	Post Medieval	A milestone, probably mid-to late C19, survives on the NE side of the A388 approx 460m SE of Camelot - C 1½, L9.
CAMELOT - Post Medieval toll house	MCO47542	Post Medieval	A typical C19 toll-house with a octagonal bay window on the north elevation survives at Camelot, previously recorded as Old Tailor's Shop.
CLIMSON - Early Medieval settlement, Medieval settlement	MCO14031	Early Medieval	The settlement of Climson is first recorded in 1045 and as a royal manor in 1086.
CLIMSON - Medieval building, Medieval settlement	MCO47511	Medieval	An area of slight earthworks is all that survives of a large building and the possible site of a larger settlement.

CLIMSON - Medieval building, Post Medieval walled garden	MCO47507	Medieval	All that survives of a possible house and its walled garden are the building platform and one of the walls to the walled garden, sited to the south of the house at Climson.
CLIMSON - Medieval findspot	MCO47510	Medieval	A medieval window fragment was located on the inside of the bank barn.
CLIMSON - Medieval house, Post Medieval house	MCO10774	Medieval	The present house at Climson was remodelled in the C19 but incorporates some earlier granite doorways.
CLIMSON - Post Medieval abattoir	MCO47509	Post Medieval	A large C19 hipped slate roof building faces into a courtyard is believed to be an abattoir.
CLIMSON - Post Medieval horse engine house	MCO47508	Post Medieval	A horse engine house, now converted, survives at Climson.
CLITTERS - Early Medieval field boundary, Post Medieval field boundary	MCO40316	Early Medieval	A field boundary is visible as a 55m long ditch on aerial photographs and is likely to be post medieval in origin.
CLITTERS - Early Medieval streamworks	MCO40300	Early Medieval	Tin streamworking is visible on aerial photographs.
CLITTERS - Modern accommodation bridge	MCO53775	Modern	A bridge carrying the Callington branch over a farm access.
CLITTERS - Post Medieval field system	MCO40315	Post Medieval	A series of banks forming a pattern of small (20m by 18m) rectangular fields is visible on aerial photographs and are likely to be late post medieval in origin.
CLITTERS - Post Medieval quarry	MCO47568	Post Medieval	An area of earthworks together with large granite boulders is all that survives of a possible early opencast granite quarry.
COCKINGTON - Early Medieval field boundary, Medieval field boundary	MCO39593	Early Medieval	A field boundary, 102m long, is visible as a low earth bank on aerial photographs.
COCKINGTON - Medieval settlement	MCO14036	Medieval	The settlement of Cockington is first recorded in 1269.
COCKINGTON - Post Medieval settlement	MCO47670	Post Medieval	An area of earthworks up to 2.5m high is all that survives of "Higher Cockington".
COCKINGTON - Post Medieval settlement	MCO47671	Post Medieval	An area of earthworks and building platforms is all that survives of a settlement.
COOMBESHEAD - Medieval settlement	MCO14106	Medieval	The settlement of Coombeshead is first recorded in 1296.
CROCKET - Medieval settlement	MCO14172	Medieval	The settlement of Crocket is first recorded in 1337 when it is spelt "Knoket" and is subdivided into Higher and Lower Crockett.
DEANS - Post Medieval settlement	MCO47550	Medieval	The settlement of Deans is first recorded in 1337 when it is spelt "Dene".

DEER PARK FARM - C20 packing shed	MCO77639	Modern	Extant C20 packing shed
DEER PARK FARM - Early Medieval trackway	MCO51406	Early Medieval	A sunken lane, c2m wide, 100m long, considered likely to be of Early Medieval date.
DEER PARK FARM - Medieval longhouse?, Medieval hunting lodge?	MCO47473	Medieval	A C19 Deer Park lodge consists of two cottages, north of Deer Park Farm.
DEER PARK FARM - Medieval settlement	MCO15106	Medieval	The settlement of Deer Park Farm was previously named Keribullock, first recorded in 1204.
DEER PARK FARM - Post Medieval well house	MCO51404	Post Medieval	Small C19 well house constructed of granite and shillet.
DEERPARK MINE - Post Medieval engine house	MCO52739	Post Medieval	Sited on a Deer Park is a Listed Engine house which housed a pumping engine.
DIGHOUSE - Early Medieval field system, Medieval field system	MCO39892	Early Medieval	A series of field boundaries are visible as ditches on air photographs
DIGHOUSE - Medieval settlement, Post Medieval settlement	MCO14267	Medieval	The settlement of Dighouse is first recorded in 1553 when it is spelt "Dygehouse".
DOWNEND - Undated enclosure	MCO39602	Undated	A curvilinear enclosure, 70m in diameter, is visible as a low earth bank on aerial photographs.
DOWNEND - Undated field system	MCO20856	Undated	Field boundaries surviving as low earth banks are visible on aerial photographs.
DOWNGATE - Post Medieval extractive pit, Post Medieval spoil heap	MCO40278	Post Medieval	An extensive area of spoil and two pits or shafts are visible on air photographs
DOWNGATE - Post Medieval nonconformist chapel	MCO32718	Post Medieval	The C19 chapel comprised of a chapel, church hall and a Sunday school and has been converted for domestic use c1994.
DOWNGATE - Post Medieval shaft	MCO40270	Post Medieval	A shaft is marked at this location on recent OS maps
DOWNHOUSE - Medieval settlement	MCO14293	Medieval	The settlement of Downhouse is first recorded in 1337.
DOWNHOUSE - Post Medieval findspot, Post Medieval cider mill	MCO47252	Post Medieval	A cider millstone is located in the garden to the south of the farmhouse at Downhouse, suggesting the possible site of a cider mill at Downhouse.
DOWNHOUSE - Post Medieval horse engine house	MCO47250	Post Medieval	The reduced round shaped wall is all that survives of the wheelhouse at Downhouse.
DOWNHOUSE - Post Medieval well house, Post Medieval well, Post Medieval butter well	MCO47251	Post Medieval	A butterwell with slate roof survives near a spring and well house.

DREWSLAND - Medieval settlement	MCO14311	Medieval	The settlement of Drewsland is first recorded in 1405 and last recorded on the OS map of 1876. The settlement is considered likely to be lost.
EAST HOLMBUSH - Early Medieval field boundary, Post Medieval field boundary	MCO40267	Early Medieval	A bank, 35m long, is visible on air photographs
EAST KIT HILL MINE - C19 mine office	MCO75644	Post Medieval	Extant C19 mine office
EAST KIT HILL MINE - Post Medieval engine house	MCO52743	Post Medieval	Engine house situated on the site of East Kit Hill Mine, which had a whim engine.
ENDSLEIGH - Post Medieval park	MCO42058	Post Medieval	Part of an extensive park associated with Endsleigh House.
GNATHAM - Medieval settlement, Post Medieval millstone, Post Medieval sheep dip, Post Medieval adit	MCO14537	Medieval	The settlement of Gnatham is first recorded in 1301. Earthworks and building platforms and one ruined cob and stone building is all that survive of the settlement.
GOOSEWELL - C19 signpost	MCO47232	Post Medieval	A granite direction post, probably mid C19 with inscribed pointing hands approx 0.8m high, triangular in shape with rounded base.
GOOSEWELL - C19 signpost	MCO47233	Post Medieval	A granite direction post, probably mid C19 with inscribed pointing hands approx 0.8m high, triangular in shape with rounded base.
GOOSEWELL - Medieval settlement	MCO14587	Medieval	The settlement of Goosewell is first recorded in 1341.
GOOSEWELL - Post Medieval findspot, Post Medieval horse engine house, Post Medieval mill	MCO47231	Post Medieval	A ruined Post Medieval building, possibly a mill.
GOOSEWELL - Post Medieval pottery works	MCO47229	Post Medieval	In 1842 this large triangular field consisted of a number of smaller fields, all called "Potters Park", suggesting a pottery works.
GOOSEWELL - Post Medieval settlement	MCO47230	Post Medieval	All that survives of a larger Goosewell settlement is dilapidated farm building.
GOOSEWELL - Post Medieval streamworks	MCO47227	Post Medieval	Earthworks, banks and pits etc are visible in this field and all that survives of steamworking.
GREAT WHEAL MARTHA - Post Medieval mine	MCO39383	Post Medieval	This mine had worked under various names including Wheal Martha and New Great Consols.
GREAT WHEAL SHEBA - Modern chimney	MCO47489	Modern	A mid C19 chimney constructed in roughly coursed slate stone with a red brick top.
GREAT WHEAL SHEBA - Post Medieval engine house	MCO52768	Post Medieval	Engine house situated on the site of Great Wheal Sheba , which had a whim engine.
GREAT WHEAL SHEBA - Post Medieval stone working site, Post Medieval quarry	MCO47492	Post Medieval	The earthwork is a large cutting made into the hillside forming a flat 'working area'; although it may be another quarry.

GREAT WOOD - Modern quarry	MCO39654	Modern	A disused quarry is marked at this location on recent OS maps
GREENSCOOMBE WOOD - Post Medieval market garden	MCO47557	Post Medieval	The remnants of a market garden industry along the Tamar Valley.
HATCH - Medieval fish weir, Medieval settlement	MCO14757	Medieval	The settlement of Hatch is first recorded in 1491.
HAYLAND - Post Medieval quarry	MCO47556	Post Medieval	A stone quarry survives and another small quarry survives as SX3923 7305, east of Haylands.
HAYLANDS - Post Medieval milestone	MCO49109	Post Medieval	A milestone, probably late C18, survives on the east side of an unclassified road approx 310m south of Haylands - C3.
HIGH TRIP LANE - Iron Age round, Romano British round, Post Medieval pit	MCO8046	Prehistoric	Two concentric curvilinear enclosures surviving as cropmark ditches on air photos, possibly a round house within the enclosing ditch of a round.
HIGHER CROCKETT - Post Medieval settlement	MCO52816	Post Medieval	The settlement of Crockett is first recorded in 1337 and subdivided into Higher and Lower Crockett.
HIGHER HAMPT - Medieval settlement	MCO14740	Medieval	The settlement of Higher Hampt is likely to be the original site of Hampt which is first recorded in 1296.
HIGHER HAMPT - Post Medieval cemetery	MCO52283	Post Medieval	Null
HIGHER LAND - Medieval settlement	MCO15059	Medieval	The settlement of Higher Land, previously named "Ireland", is first recorded in 1337.
HIGHER LAND - Post Medieval bridge	MCO47490	Post Medieval	A stone built bridge with the remains of a parapet survives south of Higher Land.
HIGHER LAND - Post Medieval building, Post Medieval stone working site, Post Medieval quarry	MCO47488	Post Medieval	An extensive stone outcrop in the hillside is what survives of a possible quarry.
HIGHER LAND - Post Medieval quarry	MCO47491	Post Medieval	A large quarry, probably stone is cut back into the hillside to the south of Higher Land.
HIGHER LIDWELL - Early Medieval field system	MCO40284	Early Medieval	A series of field boundaries are visible as ditches on aerial photographs.
HIGHER OLDCLIMS - Post Medieval blacksmiths workshop	MCO47244	Post Medieval	A "Smithy" is recorded on the 1st Edition 1:2500 OS map c1880.
HIGHER OLDCLIMS - Post Medieval farmhouse	MCO47248	Post Medieval	The house, previously a farmhouse at Higher Oldclims is dated 1817 with late C19 or early C20 additions.
HIGHER OLDCLIMS - Post Medieval findspot, Post Medieval cider mill	MCO47247	Post Medieval	A lower cider millstone was found at Higher Oldclims, one of the surviving buildings probably housed the millstone.

HIGHER OLDCLIMS - Post Medieval settlement	MCO47245	Post Medieval	Areas of earthworks are still visible indicating a larger settlement at Higher Oldclims.
HIGHER SHERWELL - Post Medieval house	MCO47565	Post Medieval	All that survives of a C19 cottage at Higher Sherwell are the walls which are approx 4m high and the remains of at least three fireplaces.
HIGHER SOUTH COOMBE - Post Medieval farmhouse	MCO47547	Post Medieval	A mid-to late C18 two storey farmhouse, now a house.
HIGHER SOUTH COOMBE - Post Medieval findspot, Post Medieval granary, Post Medieval threshing mill, Post Medieval cider mill, Post Medieval farmstead	MCO47548	Post Medieval	The farmstead comprised of a cider mill, possibly a threshing mill or granary.
HINGSTON DOWN - Bronze Age barrow	MCO2961	Prehistoric	A round barrow approximately 11m in radius and 0.8m high.
HINGSTON DOWN - Bronze Age barrow	MCO2962	Prehistoric	A round barrow approximately 9.5m in radius and 1.0m high.
HINGSTON DOWN - Bronze Age barrow	MCO2963	Prehistoric	One of group of eight barrows on Hingston Down.
HINGSTON DOWN - Bronze Age findspot	MCO768	Prehistoric	A Bronze Age socketed axe head was found on Hingston Down.
HINGSTON DOWN - Early Medieval trackway, Medieval trackway, Post Medieval trackway	MCO29674	Early Medieval	A network of holloways on Hingston Down are visible on air photographs
HINGSTON FARM - Post Medieval trackway, Post Medieval field boundary	MCO40292	Post Medieval	A field boundary or trackway is visible as an 80m long ditch on air photographs
HINGSTON FARM - Undated field system	MCO21079	Undated	Remains of the boundaries of two polygonal shaped fields
HOLLYGROVE WOOD - Post Medieval extractive pit	MCO39660	Post Medieval	A pit is visible on air photographs.
HOLMBUSH - Medieval enclosure and field system	MCO67320	Medieval	Earthworks visible on EA NLP 2020 Lidar of Medieval curvilinear banked enclosure approximately 44m across. Possible entrance to SW. Earthworks also visible of associated Medieval field system. Under woodland
HOLMBUSH - Medieval enclosure and field system	MCO67320	Medieval	Earthworks visible on EA NLP 2020 Lidar of Medieval curvilinear banked enclosure approximately 44m across. Possible entrance to SW. Earthworks also visible of associated Medieval field system. Under woodland
HOLMBUSH - Post Medieval engine house	MCO52750	Post Medieval	Null
HOLWELL - Medieval holy well	MCO6990	Medieval	The place-name Holwell suggests the site of a holy well.
HOLWELL - Medieval settlement	MCO15024	Medieval	The settlement of Holwell is first recorded in 1302.

HOLWELL - Post Medieval barn	MCO47257	Post Medieval	An earthwork located in a field just south of Holwell is all that survives of a barn recorded on the 1st Edition 6" OS map c1880.
HOLWELL - Post Medieval cider mill	MCO47258	Post Medieval	A cider house is located in the barn next door to the water mill.
HOLWELL - Post Medieval mill pond, Post Medieval leat, Post Medieval wheel pit	MCO47256	Post Medieval	A mill pond with sluice point visible, feeds the leat via a section cut under the courtyard to the wheel pit.
HOLWELL - Post Medieval watering place, Post Medieval bridge	MCO47259	Post Medieval	A lintel bridge comprising of two long pieces of granite still survive north east of Holwell.
HORSE BRIDGE - Medieval weir	MCO23341	Medieval	Horse bridge with stone brackets possibly connected with a salmon weir or stake net.
HORSE BRIDGE - Post Medieval public house	MCO47439	Post Medieval	An area of earthworks is all that survives of a public house recorded at this location on the Tithe Map c1840.
HORSE BRIDGE - Post Medieval quarry	MCO47440	Post Medieval	A large stone quarry is visible in an area of wood south west of Horse Bridge.
HORSE BRIDGE - Post Medieval toll house	MCO47438	Post Medieval	All that survives of a toll house recorded on the Tithe Map c1842 is an area of earthwork and a building platform.
HORSEBRIDGE - Post Medieval boundary stone	MCO67178	Post Medieval	Extant Post Medieval boundary stone, one of the Cornwall County bridge stones. Inscribed with a 'C' 8" high.
HORSEBRIDGE - Post Medieval milestone	MCO49115	Post Medieval	A milestone, probably late C18, survives on the south side of an unclassified road approx 120m west of Horsebridge - C4¾.
HURLSDOWN - Medieval shaft	MCO40271	Medieval	A shaft is marked at this location on recent OS maps
JERICHO - Post Medieval spoil heap	MCO39559	Post Medieval	Two large spoil tips are visible on air photographs
KELLY BRAY - C18 boundary stone	MCO64116	Post Medieval	Extant C18 boundary stone. One of the Stokeclimsland Parish boundary stones prepared by Robert Deacon for the old Stokeclimsland Parish Council in 1799. It is inscribed 'SB' on its eastern face
KELLY BRAY - C18 boundary stone	MCO64117	Post Medieval	Extant C18 boundary stone. One of the Stokeclimsland Parish boundary stones prepared by Robert Deacon for the old Stokeclimsland Parish Council in 1799. It is inscribed 'SB' on its south eastern face
KELLY BRAY - Early Medieval ridge and furrow, Medieval ridge and furrow	MCO40269	Early Medieval	An area 94m by 77m, of ridge and furrow cultivation is visible on aerial photographs and is likely to be medieval in origin.
KELLY BRAY - Post Medieval nonconformist chapel	MCO47571	Post Medieval	The Wesleyan Methodist chapel recorded on the 1st Edition 6" OS c1880 map appears to have been built over by the present house.

KELLYHOE - Medieval settlement	MCO15090	Medieval	The settlement of Kellyhole is first recorded in 1467, named as Kellyhoe on modern mapping.
KELLYHOE - Post Medieval spoil heap	MCO47487	Post Medieval	Three large flattened mounds approx 10m wide is all that survives of possible early spoil heaps, to the NW of Kelyhoe Farm.
KENNEL - Post Medieval farmstead	MCO47536	Post Medieval	An area of earthworks and building platforms is all that survives of Kennels.
KENNELS - Post Medieval bank (earthwork), Post Medieval streamworks	MCO47539	Post Medieval	An area of earthworks are visible although they indefinable they may be the remnants of tin streamworks or an agriculture feature.
KENNELS - Post Medieval hollow way, Post Medieval bridge	MCO47538	Post Medieval	A small lintel bridge approx 0.5m wide by 0.5m deep survives caring a tarmac road over a small stream.
KERRY BULLOCK - Medieval deer park?, Post medieval house	MCO47592	Medieval	A C17 house name, "Westgate", is considered likely to refer to the site of a medieval deer park.
KINGSTON - C20 fingerpost	MCO57018	Modern	A cast iron fingerpost survives on the NE side of a crossroad east of Kingston.
KINGSTON - Early Medieval hollow way	MCO39894	Early Medieval	A trackway is marked at this location on the 1st Edition 6" OS map c1880. It is visible as a ditch and two banks (1,060m long) on aerial photographs.
KINGSTON - Medieval settlement	MCO15175	Medieval	The settlement of Kingston is first recorded in 1317.
KINGSTON - Medieval settlement	MCO47222	Medieval	An area of earthworks and small building platforms is visible south west of Kingston farmhouse.
KINGSTON - Post Medieval butter well	MCO47221	Post Medieval	A stone constructed butter well/coolhouse survives south of Kingston farmhouse.
KINGSTON - Post Medieval leat, Post Medieval water wheel, Post Medieval wheel pit	MCO47223	Post Medieval	The infilled waterwheel pit survives west of Kingston farmhouse.
KINGSTON - Post Medieval milestone	MCO49107	Post Medieval	A milestone probably late C18, survives on the SW side of an unclassified road approx 425m NNE of Kingston - IV + C.
KIT HILL - Bronze Age barrow	MCO2967	Prehistoric	A mutilated round barrow, 15m diameter and 0.8m high.
KIT HILL - Bronze Age barrow	MCO2968	Prehistoric	A mutilated round barrow is part of the Kit Hill linear barrow cemetery.
KIT HILL - Bronze Age barrow	MCO2969	Prehistoric	A barrow up to 14.2m in diameter and 0.8m high.
KIT HILL - Bronze Age barrow	MCO2970	Prehistoric	A mutilated large round barrow 20.1m in diameter, possibly re-used as a whim platform.
KIT HILL - Bronze Age barrow	MCO2971	Prehistoric	A large round barrow, 21.5m in diameter and up to 1.0m high.

KIT HILL - Bronze Age barrow	MCO2972	Prehistoric	A badly mutilated round barrow, 14m diameter and up to 0.6m high.
KIT HILL - Bronze Age barrow	MCO2973	Prehistoric	A large round barrow on the summit plateau of Kit Hill, 25.5m in diameter and up to 0.8m high.
KIT HILL - Bronze Age barrow	MCO2974	Prehistoric	A large mound on the summit of Kit Hill.
KIT HILL - Bronze Age barrow	MCO2975	Prehistoric	A very small and slightly damaged round barrow.
KIT HILL - Bronze Age barrow	MCO2976	Prehistoric	A small round barrow up to 0.7m high.
KIT HILL - Bronze Age barrow	MCO2980	Prehistoric	A large and impressive round barrow, 23m in diameter by approx 2.0m high.
KIT HILL - Bronze Age barrow	MCO2982	Prehistoric	A possible round barrow, approx 12m in diameter and 0.4m high.
KIT HILL - Bronze Age barrow	MCO2983	Prehistoric	A small and simple round barrow, approx 10m in diameter and 0.6m high.
KIT HILL - Bronze Age barrow	MCO2984	Prehistoric	A possible barrow, 6.5m N-S and 0.7m high.
KIT HILL - Bronze Age barrow	MCO2977	Prehistoric	A kerbed round barrow approx 20m in diameter and 0.7m high.
KIT HILL - Bronze Age barrow	MCO2978	Prehistoric	A large but simple round barrow, 28m by 22.5m and up to 0.8m high.
KIT HILL - Bronze Age barrow	MCO2979	Prehistoric	A large round barrow, 25.5m in diameter by 2.0m high.
KIT HILL - Bronze Age barrow	MCO2981	Prehistoric	A round barrow approx 15m in diameter and 0.8m high.
KIT HILL - Bronze Age barrow cemetery	MCO1952	Prehistoric	A distinct linear barrow group, with a few outliers, situated along the east-west ridge of Kit Hill and Hingston Down.
KIT HILL - Bronze Age enclosure	MCO21649	Prehistoric	A small curvilinear enclosure, 21m by 8.0m, probably middle Bronze Age in date.
KIT HILL - Bronze Age enclosure	MCO21648	Prehistoric	A small curvilinear enclosure, 35m by 25m, partly re-used as a reservoir by streamworkers and cut by streamworking activity.
KIT HILL - Bronze Age field system	MCO21124	Prehistoric	Ephemeral traces of a probably Bronze Age co-axial field system
KIT HILL - C18 boundary stone	MCO64071	Post Medieval	Extant boundary stone. One of the Stokeclimsland Parish boundary stones prepared by Robert Deacon for the old Stokeclimsland Parish Council in 1799. It is inscribed on its northern face 'S B'.
KIT HILL - C19 boundary stone	MCO64070	Post Medieval	Extant boundary stone, one of a group set up in 1845 by The Duchy of Cornwall to mark the southern boundary of Stoke Climsland manor's wastes
KIT HILL - C19 boundary stone	MCO64072	Post Medieval	Extant C19 boundary stone. One of the boundary stones set up in 1845 by The Duchy of Cornwall to mark the southern boundary of Stoke Climsland manor's wastes. It is inscribed '6 SC 1845'.

KIT HILL - C19 boundary stone	MCO64073	Post Medieval	Extant C19 boundary stone. One of the boundary stones set up in 1845 by The Duchy of Cornwall to mark the southern boundary of Stoke Climsland manor's wastes. It is inscribed '7 SC 1845'.
KIT HILL - C19 boundary stone	MCO64074	Post Medieval	Extant C19 boundary stone. One of the boundary stones set up in 1845 by The Duchy of Cornwall to mark the southern boundary of Stoke Climsland manor's wastes. It is inscribed '8 SC 1845'.
KIT HILL - Early Medieval field boundary, Post Medieval field boundary	MCO40314	Early Medieval	Two parallel field boundaries are visible as ditches on air photographs
KIT HILL - Early Medieval field system	MCO40291	Early Medieval	A series of field boundaries are visible as stony banks on air photographs
KIT HILL - Early Medieval field system, Modern field system	MCO40313	Early Medieval	A series of parallel field boundaries, not shown on either the 1880 1st Edition or recent OS maps, are visible as hedges on air photographs
KIT HILL - Early Medieval quarry	MCO24353	Early Medieval	A granite quarry situated on the south edge of the summit plateau of Kit Hill
KIT HILL - Medieval field system	MCO21125	Medieval	An area of c17 ha. on the south slopes of Kit Hill contains a number of essentially parallel straight banks, forming strips, some of which contain ridge and furrow cultivation
KIT HILL - Medieval field system	MCO21126	Medieval	Null
KIT HILL - Medieval field system	MCO21127	Medieval	Null
KIT HILL - Medieval hollow way, Post Medieval hollow way	MCO24348	Medieval	A group of hollow ways curving around the SE slopes of Kit Hill.
KIT HILL - Medieval mine, Post Medieval mine	MCO24365	Medieval	On Kit Hill shode working seems to have been prevalent
KIT HILL - Medieval prospecting pit, Post Medieval prospecting pit	MCO24363	Medieval	Lines of prospecting pits running N-S within Kit Hill Country Park
KIT HILL - Medieval streamworks	MCO24375	Medieval	An eluvial streamworking site, oriented SW-NE down a dry valley on the NE slopes of Kit Hill.
KIT HILL - Medieval tanners hut	MCO24376	Medieval	A ruined building survives probably a store or a shelter for tanners.
KIT HILL - Modern adit	MCO24437	Modern	A cutting with a substantial finger dump, known as "Number 2 level"
KIT HILL - Modern adit	MCO24459	Modern	An adit with an associated finger dump, cut into the higher north slope of Kit Hill
KIT HILL - Modern barn	MCO24344	Modern	The footings of a field barn associated with C20 field enclosures.
KIT HILL - Modern barn	MCO24345	Modern	A pair of conjoined rectangular barns, now ruined levelled into the slope on the lower N slopes of Kit Hill.

KIT HILL - Modern beacon	MCO4050	Modern	Null
KIT HILL - Modern blacksmiths workshop	MCO9126	Modern	The building is interpreted as a set of workshops
KIT HILL - Modern building	MCO24357	Modern	A rectangular shelter, built of split granite blocks open on the north side where it faces onto a stone working area
KIT HILL - Modern building	MCO24358	Modern	A rectangular stone-built structure, open on its east side, which is associated with the lower quarry on the north slopes of Kit Hill.
KIT HILL - Modern building	MCO24359	Modern	A group of concrete plinths and remains of sawing and polishing sheds, situated within the cutting of Kit Hill quarry.
KIT HILL - Modern building	MCO24360	Modern	A rectangular flat foundation built of concrete
KIT HILL - Modern building	MCO24382	Modern	A rectangular cast concrete building which has 3 walls, the north end left open
KIT HILL - Modern building	MCO24426	Modern	Null
KIT HILL - Modern building	MCO24433	Modern	A rectangular area of mortared floor with a machinery base within it
KIT HILL - Modern building	MCO24434	Modern	Null
KIT HILL - Modern building	MCO24440	Modern	Null
KIT HILL - Modern enclosure	MCO21653	Modern	A now disused rectilinear enclosure defined by upright granite fence posts located on the lower north slope of Kit Hill.
KIT HILL - Modern field system	MCO21128	Modern	C19 and C20 enclosures, created from open moorland on the lower slopes of Kit Hill after the Enclosure Acts.
KIT HILL - Modern field system	MCO21129	Modern	Null
KIT HILL - Modern field system	MCO21130	Modern	Null
KIT HILL - Modern leat	MCO24442	Modern	A leat which flows along the north and east slopes of Kit Hill
KIT HILL - Modern mine	MCO12207	Modern	A mining complex consisting of an adit, shafts and levels together with surface remains of workshops, dumps and access tracks
KIT HILL - Modern mine	MCO12209	Modern	A tin and wolfram mine located on the E slope of Kit Hill, opened by the Duchy of Cornwall in 1916 to assist the war effort.
KIT HILL - Modern powder magazine	MCO24469	Modern	A square building constructed of granite, interpreted as a magazine
KIT HILL - Modern reservoir	MCO24441	Modern	A rectilinear reservoir rendered internally with concrete
KIT HILL - Modern shaft	MCO24412	Modern	Null
KIT HILL - Modern shaft	MCO24427	Modern	A shaft is still open in the side of the lower quarry in the Kit Hill quarry complex.
KIT HILL - Modern shaft	MCO24428	Modern	A pair of shafts cut into either a lode back working or a partially backfilled openwork.

KIT HILL - Modern shaft	MCO24431	Modern	A shaft and dump probably associated with "Jacks Shaft" complex.
KIT HILL - Modern shaft	MCO24438	Modern	A shaft sunk on the line of No.2 Level of 20th century mine 15072
KIT HILL - Modern shaft	MCO24439	Modern	Null
KIT HILL - Modern shaft	MCO24449	Modern	An open shaft cut into a stockwork quarry
KIT HILL - Modern shaft	MCO24451	Modern	A shaft which appears to cut the east end of a tramway
KIT HILL - Modern shaft	MCO24452	Modern	A blocked and coned off shaft.
KIT HILL - Modern shaft	MCO24455	Modern	A group of three shafts.
KIT HILL - Modern shaft	MCO24456	Modern	A probable collapsed ventilation shaft situated c55m south of North Engine Shaft
KIT HILL - Modern spoil heap	MCO24432	Modern	A dump situated at the north end of costeaning trench (15072)
KIT HILL - Modern spoil heap	MCO24435	Modern	A complex of a winding shed, incline plane and cable return channel superimposed on 3 fine finger dumps of a 20th century mine
KIT HILL - Modern spoil heap	MCO24436	Modern	Two finger dumps and a revetment created from the dumping of material from a 20th century mine
KIT HILL - Modern trackway	MCO24430	Modern	A trackway connecting no. 2 Adit complex on the NW slopes of Kit Hill to the base of the hill.
KIT HILL - Neolithic findspot	MCO828	Prehistoric	A small slightly damaged flint leaf-shaped arrowhead found on the SE slopes of Kit Hill.
KIT HILL - Neolithic long barrow	MCO11009	Prehistoric	A long earthen mound was discovered in 1982 by Geoff Walford.
KIT HILL - Post Medieval adit	MCO24391	Post Medieval	This feature is an adit which drained South Kit Hill Mine
KIT HILL - Post Medieval adit	MCO24377	Post Medieval	An adit cut into the bed of streamworks (15056)
KIT HILL - Post Medieval adit	MCO24378	Post Medieval	An adit with a fine stone portal runs beneath a lane leading to a nearby small holding.
KIT HILL - Post Medieval adit	MCO24460	Post Medieval	A small adit on the north-east slope of Kit Hill,
KIT HILL - Post Medieval blacksmiths workshop	MCO9124	Post Medieval	A rectangular building on the north slopes of Kit Hill
KIT HILL - Post Medieval blacksmiths workshop	MCO9125	Post Medieval	A "Smithy" is recorded on the 1st Edition 6" OS map c1880.
KIT HILL - Post Medieval boundary	MCO24338	Post Medieval	A number of curving boundaries on Kit Hill enclose large blocks of rough pasture.
KIT HILL - Post Medieval boundary	MCO54136	Post Medieval	The remains of a Cornish hedge.
KIT HILL - Post Medieval boundary	MCO24343	Post Medieval	A probable post-medieval bank on the lower west slopes of Kit Hill.

KIT HILL - Post Medieval boundary	MCO24339	Post Medieval	A long twisting boundary built of Cornish hedging which encloses Kit Hill summit from the north. It is considered likely to be post medieval in date.
KIT HILL - Post Medieval boundary	MCO24340	Post Medieval	Null
KIT HILL - Post Medieval boundary	MCO24341	Post Medieval	Null
KIT HILL - Post Medieval boundary bank	MCO24418	Post Medieval	A Cornish hedge defining the SWside of Kit Hill mine complex
KIT HILL - Post Medieval boundary stone	MCO24347	Post Medieval	Eighteen upright granite posts within Kit Hill Country Park have been identified as boundary stones
KIT HILL - Post Medieval boundary stone	MCO45251	Post Medieval	Two mine bound stones on the lower slopes of Kit Hill.
KIT HILL - Post Medieval boundary stone	MCO64066	Post Medieval	Extant Post Medieval boundary stone. One of eight on the north west slope that defines the sides of a block of land called Robinsland. Six of the stones are inscribed with the letters 'RL' including this one
KIT HILL - Post Medieval boundary stone	MCO64105	Post Medieval	Extant Post Medieval boundary stone. One of eight boundary stones on the north west slope that define a block a land called Robinsland.
KIT HILL - Post Medieval boundary stone	MCO64106	Post Medieval	Extant Post Medieval boundary stone. One of eight boundary stones on the north west slope that define the sides fo a block of land called Robinsland. It is inscribed 'RL' on its southern face
KIT HILL - Post Medieval boundary stone	MCO64107	Post Medieval	Extant Post Medieval boundary stone. One of eight boundary stones on the north west slope that define the sides fo a block of land called Robinsland. It is inscribed 'RL' on its northern face
KIT HILL - Post Medieval boundary stone	MCO64108	Post Medieval	Extant Post Medieval boundary stone. One of eight boundary stones on the north west slope that define the sides fo a block of land called Robinsland. It is inscribed 'RL' on its southern face
KIT HILL - Post Medieval boundary stone	MCO64109	Post Medieval	Extant Post Medieval boundary stone. One of eight boundary stones on the north west slope that define the sides fo a block of land called Robinsland. It has no inscription
KIT HILL - Post Medieval boundary stone	MCO64110	Post Medieval	Extant Post Medieval boundary stone. It is uninscribed
KIT HILL - Post Medieval boundary stone	MCO64111	Post Medieval	Extant Post Medieval boundary stone. One of eight boundary stones on the north west slope that defines the sides of a block of land called Robinsland. It is inscribed 'RL' on its northern face
KIT HILL - Post Medieval boundary stone	MCO64112	Post Medieval	Extant Post Medieval boundary stone. One of eight boundary stones on the north west slope that defines the sides of a block of land called Robinsland. It is not inscribed

KIT HILL - Post Medieval boundary stone	MCO64113	Post Medieval	Extant Post Medieval boundary stone. One of eight boundary stones on the north west slope that defines the sides of a block of land called Robinsland. It is inscribed 'RL' on its eastern face
KIT HILL - Post Medieval boundary stone	MCO64114	Post Medieval	Extant Post Medieval boundary stone, located on the north west boundary of Kit Hill. It is inscribed 'I Spear' on its western face
KIT HILL - Post Medieval boundary stone	MCO64114	Post Medieval	Extant Post Medieval boundary stone, located on the north west boundary of Kit Hill. It is inscribed 'I Spear' on its western face
KIT HILL - Post Medieval boundary stone	MCO64122	Post Medieval	Extant Post Medieval boundary stone. It is inscribed 'HB' on its western face which faces a bank
KIT HILL - Post Medieval building	MCO24381	Post Medieval	A small building erected on a platform cut into the northern end of a streamers dump
KIT HILL - Post Medieval building	MCO24385	Post Medieval	Null
KIT HILL - Post Medieval building	MCO24395	Post Medieval	Null
KIT HILL - Post Medieval building	MCO24399	Post Medieval	A rectangular building 12.5m long, 6.3m wide containing an offset rectangular masonry pit
KIT HILL - Post Medieval building	MCO24401	Post Medieval	Null
KIT HILL - Post Medieval building	MCO24402	Post Medieval	Null
KIT HILL - Post Medieval building	MCO24413	Post Medieval	Null
KIT HILL - Post Medieval building	MCO24414	Post Medieval	Null
KIT HILL - Post Medieval building	MCO24415	Post Medieval	Null
KIT HILL - Post Medieval building	MCO24417	Post Medieval	Null
KIT HILL - Post Medieval calciner	MCO24423	Post Medieval	A poorly preserved calciner building associated with the Kit Hill mine dressing floor
KIT HILL - Post Medieval capstan	MCO24389	Post Medieval	Null
KIT HILL - Post Medieval chimney	MCO24386	Post Medieval	A simple 11.5m tall chimney stack
KIT HILL - Post Medieval chimney	MCO24408	Post Medieval	An ornate chimney stack that once served the mining complex on Kit Hill summit
KIT HILL - Post Medieval earthwork	MCO24461	Post Medieval	A group of broad linear depressions are probably ploughed out tinner's pits.
KIT HILL - Post Medieval enclosure	MCO21652	Post Medieval	A surviving part of a sub-circular enclosure, now mostly cut away by Kit Hill quarry.
KIT HILL - Post Medieval enclosure	MCO21654	Post Medieval	An angle of hedging creating an enclosure adjacent to slime ponds.

KIT HILL - Post Medieval enclosure	MCO21655	Post Medieval	West of Kit Hill summit mine complex are two Cornish hedges (bottle shaped enclosure) the purpose of this feature is not known.
KIT HILL - Post Medieval enclosure	MCO21650	Post Medieval	A slightly sub-circular enclosure, one of a group of three.
KIT HILL - Post Medieval enclosure	MCO21651	Post Medieval	A slightly sub-circular enclosure, one of a group of three.
KIT HILL - Post Medieval enclosure	MCO21656	Post Medieval	A sub-circular enclosure on the higher west slope of Kit Hill.
KIT HILL - Post Medieval engine house	MCO24384	Post Medieval	A ruined engine house
KIT HILL - Post Medieval engine house	MCO24407	Post Medieval	The remains of an engine house that once served Kit Hill mine
KIT HILL - Post Medieval extractive pit	MCO24364	Post Medieval	Null
KIT HILL - Post Medieval extractive pit	MCO24366	Post Medieval	There are 72 runs of lode back pits on Kit Hill
KIT HILL - Post Medieval findspot	MCO829	Post Medieval	A worn cable guide wheel on the lower N slopes of Kit Hill.
KIT HILL - Post Medieval horse engine	MCO24463	Post Medieval	A sub-circular platform levelled into the slope
KIT HILL - Post Medieval horse whim	MCO24445	Post Medieval	Null
KIT HILL - Post Medieval leat	MCO24398	Post Medieval	Null
KIT HILL - Post Medieval leat	MCO24464	Post Medieval	The provision of water for power and washing was a major problem on Kit Hill, so a series of leats were constructed to transport the water around.
KIT HILL - Post Medieval magazine	MCO51027	Post Medieval	A dynamite store erected on the northern slopes of Kit Hill.
KIT HILL - Post Medieval mine	MCO12205	Post Medieval	South Kit Hill mine is a well preserved mining complex
KIT HILL - Post Medieval mine	MCO12208	Post Medieval	Two shafts situated on the NE slope of Kit Hill
KIT HILL - Post Medieval open cast mine	MCO24367	Post Medieval	Openworks on Kit Hill
KIT HILL - Post Medieval open cast mine	MCO24453	Post Medieval	At the base of an open work are 3 gashes, the eastern one still open,
KIT HILL - Post Medieval pit	MCO24387	Post Medieval	Two parallel walls located immediately south of South Kit Hill mine engine shaft
KIT HILL - Post Medieval pit	MCO24390	Post Medieval	Null
KIT HILL - Post Medieval pond	MCO24397	Post Medieval	A pair of rectilinear tanks situated SE of South Kit Hill mine dressing floor
KIT HILL - Post Medieval powder magazine	MCO24403	Post Medieval	Null
KIT HILL - Post Medieval powder magazine	MCO24468	Post Medieval	A small square building constructed of granite, which was probably originally a magazine for Kit Hill quarry
KIT HILL - Post Medieval quarry	MCO24350	Post Medieval	Stone splitting pits indicating very early large scale quarrying.
KIT HILL - Post Medieval quarry	MCO24462	Post Medieval	A small quarry on north east slope of Kit Hill.
KIT HILL - Post Medieval quarry	MCO24351	Post Medieval	An early granite quarry on the higher south slopes of Kit Hill

KIT HILL - Post Medieval quarry	MCO24352	Post Medieval	A group of early industrial granite quarries located on the south slopes of Kit Hill
KIT HILL - Post Medieval quarry	MCO24368	Post Medieval	A group of 18 irregular cuttings into the west slopes of Kit Hill.
KIT HILL - Post Medieval quarry	MCO40301	Post Medieval	A complex of two granite quarries, both cut into the upper half of the north slope of Kit Hill
KIT HILL - Post Medieval quarry	MCO24369	Post Medieval	A group of three linked quarry cuttings.
KIT HILL - Post Medieval quarry	MCO24370	Post Medieval	An irregular cutting following geological lodes.
KIT HILL - Post Medieval quarry	MCO24371	Post Medieval	The central stockwork quarry in a group of three.
KIT HILL - Post Medieval quarry	MCO24372	Post Medieval	A stonework quarry with tramway, one of a group of three.
KIT HILL - Post Medieval quarry	MCO24374	Post Medieval	A small and damaged stockwork quarry
KIT HILL - Post Medieval reservoir	MCO24392	Post Medieval	Two sub rectangular embanked reservoirs
KIT HILL - Post Medieval settling tank	MCO24416	Post Medieval	Two linked sub rectangular elevated ponds or tanks, still partially filled with tin slime located on Kit Hill summit
KIT HILL - Post Medieval shaft	MCO24388	Post Medieval	The engine shaft at South Kit Hill mine
KIT HILL - Post Medieval shaft	MCO24404	Post Medieval	A shaft cut through a backfilled openwork at South Kit Hill mine.
KIT HILL - Post Medieval shaft	MCO24405	Post Medieval	Null
KIT HILL - Post Medieval shaft	MCO24409	Post Medieval	North Engine Shaft was the principal shaft of the Kit Hill Summit mine
KIT HILL - Post Medieval shaft	MCO24411	Post Medieval	A shaft 40m east of North Engine Shaft on the same E-W lode line
KIT HILL - Post Medieval shaft	MCO24429	Post Medieval	A shaft connected with no 2 adit complex on the NW sloped of Kit Hill
KIT HILL - Post Medieval shaft	MCO24443	Post Medieval	A shaft situated on the lower west slopes of Kit Hill
KIT HILL - Post Medieval shaft	MCO24444	Post Medieval	A blocked shaft located on the W slope of Kit Hill is likely to be associated with Kit Hill Summit Mine.
KIT HILL - Post Medieval shaft	MCO24446	Post Medieval	An oval shaft with its dump revetted to form a stock-proof barrier
KIT HILL - Post Medieval shaft	MCO24447	Post Medieval	A shaft cut into the floor of a stockwork quarry.
KIT HILL - Post Medieval shaft	MCO24448	Post Medieval	An open gash cut into the side of a stockwork quarry.
KIT HILL - Post Medieval shaft	MCO24450	Post Medieval	Two parallel open gashes, probably breaches of an earlier openwork
KIT HILL - Post Medieval shaft	MCO24454	Post Medieval	A shaft now capped and blocked by a steel cone and infill.
KIT HILL - Post Medieval shaft	MCO24458	Post Medieval	A rectangular shaft with internal revetment
KIT HILL - Post Medieval shaft	MCO24443	Post Medieval	A shaft situated on the lower west slopes of Kit Hill
KIT HILL - Post Medieval shaft	MCO24457	Post Medieval	A shaft enclosed by a cornish hedge on the north boundary of Kit Hill Country Park
KIT HILL - Post Medieval siegework	MCO24424	Post Medieval	A probable Civil War defended enclosure located on Kit Hill summit

KIT HILL - Post Medieval spoil heap	MCO24396	Post Medieval	A large tailings dump up to 5.0m high immediately south of South Kit Hill mine dressing floor
KIT HILL - Post Medieval spoil heap	MCO24420	Post Medieval	A complex of spoil dumps associated with south engine shaft of Kit Hill mine.
KIT HILL - Post Medieval spoil heap	MCO24373	Post Medieval	Null
KIT HILL - Post Medieval stamping mill	MCO24393	Post Medieval	Null
KIT HILL - Post Medieval stone working site	MCO24349	Post Medieval	4839 moorstone splitting pits were surveyed on Kit Hill
KIT HILL - Post Medieval tin mill	MCO24380	Post Medieval	A small dressing floor in the bed of Kit Hill streamworks
KIT HILL - Post Medieval tin mill	MCO24394	Post Medieval	A processing floor for dressing tin ore, part of South Kit Hill mine
KIT HILL - Post Medieval tin mill	MCO24421	Post Medieval	A tin dressing floor situated immediately north of Kit Hill mine buildings complex.
KIT HILL - Post Medieval tin mill	MCO24422	Post Medieval	Settling tanks, low tailings dumps and the remains of a stamping platform.
KIT HILL - Post Medieval trackway	MCO24362	Post Medieval	A hollow-way on the NE slopes of Kit Hill
KIT HILL - Post Medieval trackway	MCO24465	Post Medieval	A group of 6 levelled and at least partially matelled tracks
KIT HILL - Post Medieval trackway	MCO24466	Post Medieval	A group of six irregular sunken tracks or hollow ways linking various locations on Kit Hill.
KIT HILL - Post Medieval tramway	MCO24410	Post Medieval	A flat bottomed cutting of regular width
KIT HILL - Post Medieval wheel pit	MCO24361	Post Medieval	Null
KIT HILL - Post Medieval wind engine	MCO24419	Post Medieval	A structure may relate either to the wind engine or perhaps the nearby claciner flue.
KIT HILL - Post Medieval windmill	MCO24406	Post Medieval	Two concentric stone revetments built upon a mound, likely to have been the base of a wind engine which existed in the early 19th century.
KIT HILL - Post Medieval workshop, Post Medieval counting house, Post Medieval building	MCO24470	Post Medieval	A ruined rectilinear building comprising of two or more rooms, possibly a count house or workshops.
KIT HILL - Prehistoric stone	MCO64120	Prehistoric	Described in the CAU survey report of 1988 as a large upright stone on the heavily overgrown north western slopes of Kit Hill. It was investigated in 1989 by digging around the base. It was established that the stone is attached to bedrock, so is a natura
KIT HILL - Undated powder magazine	MCO24467	Undated	A small rectangular building constructed of granite (h1) which was used as a magazine for Kit Hill quarry

KIT HILL - Undated quarry	MCO24354	Undated	The NW part of this quarry is a collection of irregular pits and dumps
KIT HILL - Undated quarry	MCO24355	Undated	This quarry shows a succession of cuttings and an overlapping pattern of dumps,
KIT HILL - Undated trackway	MCO24356	Undated	Null
KIT HILL GREAT CONSOLS - Post Medieval mine	MCO12206	Post Medieval	A mining complex located at the summit of Kit Hill, which was worked in at least 3 phases.
LIDWELL - C20 fingerpost	MCO57019	Modern	A short cast iron fingerpost survives built into a Cornish hedge on the north side of an unclassified road junction NW of Lidwell.
LIDWELL - Medieval settlement	MCO15422	Medieval	The settlement of Lidwell is first recorded in 1296.
LIDWELL - Post Medieval farmhouse	MCO47450	Post Medieval	A late C17 farmhouse, now a house with later additions and alterations.
LIDWELL - Post Medieval findspot, Post Medieval settling tank, Post Medieval mill pond, Post Medieval findspot, Post Medieval tannery, Post Medieval m	MCO47448	Post Medieval	The building foundations and walls survive at the same location as a "Tanyard" recorded in the Tithe Award c1842.
LIDWELL - Post Medieval leat	MCO29667	Post Medieval	A ditch, likely to be a leat, is visible on aerial photographs.
LITTLE NORTHDOWN - Medieval field system, Post Medieval field system	MCO21173	Medieval	The boundaries of strip fields, surviving as low earth banks, are visible on air photographs
LITTLE NORTHDOWN - Medieval settlement, Medieval field system, Post Medieval adit	MCO15457	Medieval	A possible deserted settlement consisting of building platforms surviving as low earth banks, visible on aerial photographs.
LITTLE NORTHDOWN - Post Medieval cider mill, Post Medieval findspot	MCO47208	Post Medieval	A cider running millstone is located in front of the house at Little Northdown, a possible site of a cider mill.
LITTLE NORTON - Early Medieval field boundary, Medieval field boundary	MCO39893	Medieval	Two field boundaries are visible as ditches on air photographs
LITTLE NORTON - Post Medieval streamworks	MCO47215	Post Medieval	Areas of earthworks at the lower half of a field to the south of the stream and to the north are likely to be alluvial steamworking
LOCKINGTON - C19 signpost	MCO57020	Post Medieval	A C19 granite direction stone survives on the eastern side of an unclassified crossroads east of Lockington.
LOWER CROCKETT - Early Medieval field system, Medieval field system	MCO40273	Early Medieval	A series of field boundaries is visible on air photographs

LOWER CROCKETT - Medieval farmhouse, Post Medieval barn, Post Medieval architectural fragment, Post Medieval farmhouse	MCO47555	Medieval	The barn contains a reused C17 cut granite mullioned stone. The farmhouse is C19 however an area of earthworks to the south could be the site of the earlier house.
LOWER CROCKETT - Post Medieval findspot, Post Medieval cider mill	MCO47554	Post Medieval	The foundations of a cider house survive.
LOWER CROCKETT - Post Medieval malt house	MCO47552	Post Medieval	The field name "Malt House Meadow" is recorded in the Tithe Award c1842 to the south of Lower Crocket
LOWER CROCKETT - Post Medieval settlement	MCO52817	Post Medieval	The settlement of Crockett is first recorded in 1337 and subdivided into Higher and Lower Crockett.
LOWER CROCKETT FARM - Post Medieval milestone	MCO49117	Post Medieval	A milestone, probably late C18, survives on the west side of an unclassified road approx 330m NE of Lower Crockett Farm - II C.
LOWER HAMPT - Medieval fulling mill, Medieval mill, Post Medieval sluice, Post Medieval mill pond, Post Medieval cider mill	MCO47444	Medieval	The Tithe Map c1842 indicates a Medieval corn and fulling mill at Lower Hampt. Not certain whether any parts of the structure remain extant
LOWER HAMPT - Medieval settlement	MCO52818	Medieval	The settlement of Lower Hampt is a subdivision of Hampt. The original site of Hampt is likely to be at Higher Hampt.
LOWER LIDWELL - Post Medieval barn	MCO47461	Post Medieval	A bank barn.
LOWER LIDWELL - Post Medieval cider mill, Post Medieval cider press	MCO47459	Post Medieval	A disused cider mill probably late C18 or early C19.
LOWER LIDWELL - Post Medieval cow house, Post Medieval field boundary	MCO47462	Post Medieval	All that survives of a field boundary is a low earthwork.
LOWER LIDWELL - Post Medieval farmhouse, Post Medieval pump	MCO47458	Post Medieval	A late C17 farmhouse, now house incorporates parts of an earlier building.
LOWER LIDWELL - Post Medieval quarry	MCO47463	Post Medieval	The field name "Quarry Park" is recorded at this locaiton on the Tithe Map c1840 suggesting a quarry. No evidence of a quarry survives.
LOWER LIDWELL - Post Medieval whim house	MCO47460	Post Medieval	A probable whim is recorded on the Tithe Map c1842 to the rear of the main barn.
LOWER NORTON FARM - Post Medieval milestone	MCO54185	Post Medieval	A milestone survives on the east side of the A388 west of Lower Norton Farm "Callington 4½ Launceston 6".
LOWER PEMPWELL - Medieval lynchet	MCO47240	Medieval	Field lynchet boundaries are visible west of Lower Pempwell and also at SX3736 7516.

LOWER PEMPWELL - Post Medieval butter well	MCO47242	Post Medieval	A purpose built C19 cold store house
LOWER PEMPWELL - Post Medieval settlement, Post Medieval trackway, Post Medieval house	MCO47241	Post Medieval	Earthworks and a building platform together with evidence of a trackway is all that survives of the shrunken settlement of Lower Pempwell.
LOWER TRELAY - Post Medieval settlement	MCO47236	Post Medieval	The settlement of Lower Trelay is recorded on Martyn's map c1748.
LOWER TROWES - Post Medieval settlement	MCO47480	Post Medieval	An area of earthworks and building platforms cut into the hillside is all that survives of a larger farm complex south of Lower Trowes.
LUCKETT - Iron Age round, Romano British round, Undated enclosure	MCO8214	Prehistoric	An oval enclosure, 71m by 58m, visible on aerial photographs as a low earth bank which in the east and south-east is fossilised by the present field hedge.
LUCKETT - Medieval hall house	MCO47467	Medieval	Possible Hall House at Lockett.
LUCKETT - Medieval settlement	MCO47477	Medieval	A flat area cut out of a scarp to form what seem to be building platforms are visible west of Lockett.
LUCKETT - Medieval settlement, Post Medieval settlement	MCO15586	Medieval	The settlement of Lockett is first recorded in 1554 when it is spelt "Lovecote".
LUCKETT - Medieval streamworks	MCO47478	Medieval	An area of small earthworks is all that survives of past tin streamworkings.
LUCKETT - Medieval streamworks	MCO47483	Medieval	The valley, in which Lockett is located has a number of areas of earthworks which is all that survives of streamworking activity.
LUCKETT - Post Medieval building	MCO76064	Post Medieval	Extant Post Medieval building, highlighted as a building of local important in the Lockett Conservation Area Appraisal
LUCKETT - Post Medieval building	MCO76065	Post Medieval	Extant Post Medieval building, highlighted as a building of local important in the Lockett Conservation Area Appraisal
LUCKETT - Post Medieval cemetery	MCO52282	Post Medieval	Null
LUCKETT - Post Medieval counting house	MCO47476	Post Medieval	A well constructed mine count house, probably C19 survives at Lockett.
LUCKETT - Post Medieval hedgerows	MCO76063	Post Medieval	Historic Post Medieval hedgerows highlighted as important to the local area in the Lockett Conservation Area Appraisal
LUCKETT - Post Medieval house, Post Medieval miners changing house	MCO47474	Post Medieval	C19 miners boarding/lodging house survives in Lockett.
LUCKETT - Post Medieval mill house	MCO29469	Post Medieval	A Mill House at Lockett is recorded in the Tithe Award c1842.

LUCKETT - Post Medieval nonconformist chapel	MCO32721	Post Medieval	The site of late C19 Gothic style chapel, recorded on the 1st Edition 1:2500 OS map, was demolished in 1997. The surrounding grave yard and enclosure wall still survives.
LUCKETT - Post Medieval row	MCO76062	Post Medieval	Extant row of cottages with a nice example of local use of granite in the stone steps. Highlighted as a building of local importance in the Lockett Conservation Area Appraisal
LUCKETT - Post Medieval teachers house, Post Medieval school	MCO47475	Post Medieval	Lockett Church of England School was built in 1861 and is recorded as a school on the OS 1st and 2nd Edition 1:25000 maps.
LUCKETT - Post Medieval water wheel	MCO29466	Post Medieval	A water wheel at Lockett is recorded on Symons' c1848 map
LUCKETT - Prehistoric field system, Medieval settlement, Medieval streamworks	MCO29668	Prehistoric	A series of linear banks are possibly the remains of a field system or streamworks and are visible on aerial photographs.
LUCKETT STATION - Modern railway station	MCO47563	Modern	Lockett Station on the Callington branch.
MADERS - Post Medieval farmstead	MCO47666	Post Medieval	The farmhouse is partly demolished; the western half appears to have been used as a cowhouse/hayloft and the eastern side has a wooden lintel above the fireplace and a clome oven.
MEARFIELD - Medieval settlement	MCO15641	Medieval	The settlement of Mearfield is first recorded in 1337.
MEARFIELD - Post Medieval barn, Post Medieval mill pond, Modern wheel pit	MCO47498	Post Medieval	The grist mill stopped working in approx 1920 and associated features.
MEARFIELD - Post Medieval cider mill	MCO47499	Post Medieval	A cider house was located in the eastern part of the main barn and was powered by a chain driven mechanism.
MEARFIELD - Post Medieval findspot	MCO47501	Post Medieval	Two and three light C17 mullioned granite window used in a cows house and lintels used as a trough.
MEARFIELD - Post Medieval house	MCO47500	Post Medieval	A complete C17 three light mullioned granite windows either side of a C17 granite cut doorway is all that survive in a building at Mearfield.
MIDDLE HAMPT - C19 linhay	MCO74009	Post Medieval	Ruined remains of C19 linhay
MIDDLE HAMPT - Post Medieval cider mill, Post Medieval findspot, Post Medieval horse engine house, Post Medieval well house	MCO47445	Post Medieval	A five sided horse engine house survives at Middle Hampt.
MIDDLE HAMPT - Post Medieval findspot, Post Medieval blacksmiths workshop	MCO47441	Post Medieval	East and part of the south wall is all that survives of a Smithy.

MIDDLE HAMPT - Post Medieval settlement	MCO47442	Post Medieval	An area of earthworks in the southern part of this field is all that survives of a shrunken settlement.
MIDDLE HAMPT - Post Medieval settlement	MCO52819	Post Medieval	The settlement of Middle Hampt is a subdivision of Hampt. The original site of Hampt is likely to be at Higher Hampt.
MIDDLE HEMPT - C20 fingerpost	MCO57021	Modern	A standard cast iron fingerpost survives on the SW side of an unclassified road junction NW of Middle Hempt.
MONKSCROSS - Modern nonconformist chapel	MCO32719	Modern	The Methodist chapel with original arched window heads, now crudely blocked as part of the conversion to a house.
MONKSCROSS - Modern railway bridge	MCO53774	Modern	A bridge carrying the public road over the Callington branch.
MONKSCROSS - Post Medieval barn	MCO47558	Post Medieval	A rubble stone field barn survives with a corrugated roof covering in a field east of Monkscross.
MONKSCROSS - Post Medieval milestone	MCO49113	Post Medieval	A milestone, probably late C18, survives on the east side of an unclassified road, just south of a cross roads approx 370m SSW of Monkscross - C2.
MUGFORD - Medieval settlement	MCO15774	Medieval	The settlement of Mugford is first recorded in 1337.
MUGFORD - Post Medieval cider mill	MCO47481	Post Medieval	A rubble stone building with galvanised roof was probably a cider house.
MUGFORD - Post Medieval house	MCO47482	Post Medieval	A possible medieval farmhouse at Mugford.
MUGFORD - Post Medieval quarry	MCO40285	Post Medieval	A quarry is marked as disused at this location on the 1880 1st Edition OS map
NEWMILLS - Medieval blowing house, Post Medieval stamping mill	MCO47469	Medieval	A house, probably originally a C16 blowing house and stamping mill.
NEWMILLS - Post Medieval bridge	MCO47471	Post Medieval	The road bridge at Newmill is probably late C18.
NORTH ALSTON - Post Medieval farm labourers cottage, Post Medieval farm building, Post Medieval settlement, Post Medieval findspot, Post Medieval cide	MCO47421	Post Medieval	An area of earthworks with slight building platform is all that survives of a larger settlement.
NORTH DOWN - Medieval settlement	MCO15955	Medieval	The settlement of Northdown is first recorded in 1337.
NORTON - Medieval findspot	MCO47220	Medieval	A medieval cut stone window is visible in the east gable end of the cow house/hayloft at Norton.
NORTON - Medieval settlement	MCO15961	Medieval	The settlement of Norton is first recorded in 1296.
NORTON - Post Medieval barn, Post Medieval granary, Post Medieval threshing mill	MCO47216	Post Medieval	The main shaft and flywheels for a threshing mill are in situ in a very large bank barn at Norton.

NORTON - Post Medieval cider press, Post Medieval cider mill	MCO47219	Post Medieval	A cider press house is in situ at Norton.
NORTON - Post Medieval cider press, Post Medieval cider mill	MCO47219	Post Medieval	A cider press house is in situ at Norton.
NORTON - Post Medieval cow house, Post Medieval cart shed	MCO47217	Post Medieval	Pair of farm buildings survive at Norton: a small stone cart house and a very large C19 shippon with hayloft above.
NORTON - Post Medieval farmhouse	MCO47214	Post Medieval	The older part of the farmhouse, to the rear, is possibly C18 with C18 wooden beams in the kitchen.
NORTON - Post Medieval water wheel, Post Medieval leat, Post Medieval mill pond	MCO47213	Post Medieval	The site of a water wheel, wheelpit, leat and millpond at Norton.
NORTON BARTON - Mid/Late Iron Age round	MCO75567	Prehistoric	Cropmarks visible indicating a round which typically date form the mid/late Iron Age
OLD CLIMS - Medieval settlement	MCO15970	Medieval	The settlement of Old Clims is first recorded in 1337.
OLD CLIMS - Post Medieval butter well	MCO47238	Post Medieval	A rubble masonry butterwell with two windows survives.
OLD CLIMS - Post Medieval butter well, Post Medieval privy house	MCO47237	Post Medieval	The outside toilet is a rubble stone construction with a lean-to slate roof. Wooden seats are in situ and sited over a water leat.
OLD CLIMS - Post Medieval settlement, Post Medieval cottage pair	MCO47239	Post Medieval	Earthworks and a large building platform is all that survives of two farm workers' cottages.
OLDMILL - Early Medieval extractive pit	MCO40277	Early Medieval	Two oblong pits are visible on air photographs
OLDMILL - Early Medieval field system, Medieval field system	MCO40274	Early Medieval	A series of field boundaries is visible as banks on air photographs
OLDMILL - Medieval corn mill, Post Medieval corn mill	MCO23446	Medieval	The name Oldmill implies the site of a mill here by 1467.
OLDMILL - Medieval settlement	MCO15980	Medieval	The settlement of Oldmill is first recorded in 1467.
OLDMILL - Post Medieval bridge	MCO47497	Post Medieval	A low stone bridge with parapet survives west of Oldmill.
OLDMILL - Post Medieval horse trough	MCO47494	Post Medieval	A spring or well near the back door to Well House provides water to a horse trough via a shute.
OLDMILL - Post Medieval nonconformist chapel	MCO47495	Post Medieval	The Tithe Award c1842 describes this building as a "Bible Christian Society Chapel".
OLDMILL - Post Medieval sluice, Post Medieval dam	MCO47493	Post Medieval	A late C19 or early C20 dam measuring approx 1.5m wide by 2m high crosses the valley south east of Oldmill.

OLDMILL - Post Medieval streamworks	MCO47496	Post Medieval	Where the two valleys meet south west of Oldmill, there are areas of earthworks which is all that survives of the streamworking.
PEMPWELL - Post Medieval well, Post Medieval pump	MCO47243	Post Medieval	A manual iron pump survives over the village well. The pump has a '2½" bore'.
PENPILL - Medieval chapel	MCO10098	Medieval	The field-name 'Chapel Moulster' possibly refers to St Mallet's chapel.
PENPILL - Medieval settlement	MCO16189	Medieval	The settlement of Penpill is first recorded in 1337.
PENPILL - Modern quarry	MCO39664	Modern	A disused quarry is marked at this location on recent OS maps.
PENPILL - Post Medieval milestone	MCO54184	Post Medieval	A milestone survives on the east side of the A388, south of Penpill, "Callington 3½ Launceston 7".
PENPILL - Post Medieval mining	MCO47097	Post Medieval	An area of earthworks likely to be the remains of post medieval mining activity
PENPILL - Post Medieval mounting block, Post Medieval findspot, Post Medieval farmhouse	MCO47096	Post Medieval	A farmhouse possibly C18, with farm buildings: barn, cowhouse are recorded at Penpill.
PITT FARM - Early Medieval field system, Medieval field system	MCO39596	Early Medieval	Two field boundaries are visible as ditches on aerial photographs.
PITT FARM - Iron Age round, Romano British round, Undated enclosure	MCO8364	Prehistoric	A possible subcircular univallate enclosure, 43m in diameter, visible on aerial photographs.
PITT FARM - Medieval cross	MCO5670	Medieval	The field-name 'Cross Park' suggests the site of a cross but there are no remains.
PITT FARM - Medieval settlement	MCO16314	Medieval	The settlement of Pitt is first recorded in 1337.
PITT FARM - Post Medieval boundary stone	MCO54475	Post Medieval	A parish boundary stone, approx mid C18, survives on the SW side of the B3257 NW of Pitt Farm, between Stoke Climsland and South Hill parishes.
PITT FARM - Post Medieval milestone	MCO49112	Post Medieval	A milestone, mid-to late C19, survives on the NE side on the B3257 approx 190m NNE of Pitt Farm - CALLINGTON 3, PLYMOUTH 16.
PITT FARM - Post Medieval quarry	MCO39598	Post Medieval	A roadstone quarry is marked on the 1880 1st Edition OS map
PITT FARM - Post Medieval settlement	MCO47669	Post Medieval	An area of earthworks and building recorded on the 1st Edition 6" OS map c1882 no longer survive suggesting that the settlement was possibly larger.
POLHILSA - Medieval settlement	MCO16368	Medieval	The settlement of Polhilsa is first recorded in 1302.
POLHILSA - Modern auxiliary hide	MCO42735	Modern	Polhilsa House was owned by Captain Dingley and used to train Auxiliary Units throughout the war.

POLHILSA - Post Medieval granary, Post Medieval findspot, Post Medieval horse engine, Post Medieval cider mill	MCO47667	Post Medieval	Grinstones for the corn mill are a feature in the front of the house. Millstone for cider mill are sited near the newly dug pond and the single cylinder Blockstone engine was located near the granary.
POLHILSA - Post Medieval rabbit warren, Undated mound	MCO29653	Post Medieval	A group of at least 11 rectilinear mounds, typically 30m by 15m are visible on aerial photographs.
POLHILSA - Undated mound	MCO39562	Undated	An earth mound, 31m by 24m, is visible on aerial photographs. The date and function of the mound are uncertain.
Post Medieval Boundary Stone	MCO77193	Post Medieval	Post Medieval Boundary Stone. Marked on 1st Edition OS
POUNDFIELD - Medieval settlement	MCO16492	Medieval	The settlement of Poundfield is first recorded in 1284.
POUNDFIELD - Medieval settlement	MCO47506	Medieval	An area of earthworks south of the present Poundfield is all that survives of the larger settlement.
POUNDFIELD - Post Medieval findspot, Post Medieval cider mill	MCO47503	Post Medieval	Possible site of a cider house.
POUNDFIELD - Post Medieval hop garden, Post Medieval malt house	MCO47502	Post Medieval	The south west corner of a ruined building is all that survive of a malt house recorded on the Tithe Award c1842.
POUNDFIELD - Post Medieval leat, Post Medieval wheel pit	MCO47505	Post Medieval	A wheelpit, now infilled is located to the west of Poundfield and an underground slate lined waterway.
POUNDFIELD - Post Medieval pound	MCO47504	Post Medieval	The possible site of a pound for the Duchy Manor of Climsland.
QUARRYHILL WOOD - Early Medieval field system	MCO39642	Early Medieval	A series of field boundaries are visible as banks on air photographs
QUARRYHILL WOOD - Modern quarry	MCO39650	Modern	A quarry is visible on air photographs (p1) and was plotted as part of the NMP
QUARRYHILL WOOD - Post Medieval quarry	MCO39651	Post Medieval	A disused quarry, probably slate, is shown at this location on the 1st Edition 6" OS map c1880.
ROW DOWN - Bronze Age barrow	MCO3437	Prehistoric	A bowl barrow in Gunoak Wood has been opened but no finds have been recorded.
ROW DOWN - Bronze Age barrow	MCO3438	Prehistoric	A bowl barrow in Gunoak Wood has been opened but no finds have been recorded.
ROW DOWN - Medieval settlement	MCO47206	Medieval	An area of low earthworks is all that survives of Row Down, a settlement marked on Martyn's map c1748.
SEVENSTONES - Early Medieval field boundary, Post Medieval field boundary	MCO40289	Early Medieval	A field boundary is visible as an 83m long bank on air photographs
SHERWELL - Post Medieval house	MCO47559	Post Medieval	A small cottage with two rooms survives north of Sherwell Farm.

SHERWELL - Post Medieval smallholding	MCO47561	Post Medieval	A building platform near the river is all that survives of a smallholding to the north of Sherwell.
SHUTTA - Post Medieval cider mill, Post Medieval house	MCO47513	Post Medieval	The C17 house, previously a farm house, has later additions and alterations.
SHUTTA - Post Medieval horse engine house	MCO47516	Post Medieval	Remains of a wheel house.
SHUTTA - Post Medieval horse trough, Post Medieval blacksmiths workshop	MCO47518	Post Medieval	A smithy possibly C19 survives north-west of Shutta.
SHUTTA - Post Medieval settlement	MCO47514	Medieval	The settlement of Shutta is first recorded in 1562 when it is spelt "Leshutta Park".
SHUTTA - Post Medieval settlement	MCO47517	Post Medieval	Earthworks and building platforms are all that survive of a larger settlement.
SHUTTA - Post Medieval stable	MCO47515	Post Medieval	A C18 stable.
SHUTTA - Post Medieval watercourse	MCO47585	Post Medieval	The Tithe Award records the area "River and Island" and was the product of Sir John Call's landscaping in the early C19 and it included waterfall and islands.
SOUTH ALSTON - Post Medieval cider mill, Post Medieval mill pond	MCO47419	Post Medieval	A purpose built millpond with a hedge retaining the water survives at South Alston.
SOUTH ALSTON - Post Medieval settlement, Post Medieval streamworks	MCO47420	Post Medieval	A series of earthworks around a small stream could be all that survives of a settlement or tin streaming activity.
SOUTH COOMBE - Medieval settlement	MCO16796	Medieval	The settlement of South Coombe is first recorded in 1337.
SOUTH COOMBE - Modern military site	MCO12524	Modern	Three buildings are visible on aerial photographs.
SOUTH COOMBE - Post Medieval barn, Post Medieval settlement	MCO47545	Post Medieval	The shrunken settlement at South Coombe.
SOUTH COOMBE - Post Medieval farmstead	MCO47546	Post Medieval	An area of earthworks and building platforms on either side of the track is all that survives of a farmstead recorded on the 1st Edition 6" OS map c1880.
SOUTH COOMBESHEAD - Medieval settlement, Post Medieval settlement	MCO47541	Medieval	Building foundations and earthworks are all that survive of the C18-C19 settlement.
SOUTH COOMBESHEAD - Post Medieval horse engine house, Post Medieval barn, Post Medieval farmstead	MCO47540	Post Medieval	All the main farm buildings are well built, rubble stone with hipped slate roofs, some C19 windows, face into a courtyard.
SOUTHPARK WOOD - Early Medieval field boundary, Medieval field boundary	MCO39658	Early Medieval	A field boundary, 135m long, is visible as a ditch on air photographs

ST MALLETS WELL - Iron Age round, Romano British round, Undated enclosure	MCO8513	Prehistoric	A large subcircular enclosure, 111m diameter, fossilised by the present field hedge on the western side and surviving as a faint cropmark visible on aerial photographs to the east.
ST MALLETS WELL - Medieval holy well, Post Medieval holy well	MCO7096	Medieval	The site of St Mallets Well.
STOKE CLIMSLAND - C19 sundial	MCO66896	Post Medieval	Extant sundial on the gable of the porch of Stoke Climsland Church. It is inscribed 'T H BRIMACOMBE / A KELLY / CHURCH WARDENS / 1834'
STOKE CLIMSLAND - C20 cottages	MCO58886	Modern	Duchy Cottages comprise of eight semi-detached two-storey houses facing onto a village green, complete with play area. The properties are of four different designs and built by the Duchy of Cornwall Estate in the interwar period as accommodation for the h
STOKE CLIMSLAND - C20 Village Hall	MCO47528	Modern	Village Hall and forecourt, 1913 by Sir Albert Richardson; extant
STOKE CLIMSLAND - C20 war memorial	MCO61239	Modern	Extant C20 granite war memorial to commemorate those killed in the first and second world wars
STOKE CLIMSLAND - Medieval architectural fragment, Post Medieval blacksmiths workshop	MCO47524	Medieval	A large forge oven was found in the east wall of the stables and a C16 stone cut window is visible in the east gable end.
STOKE CLIMSLAND - Medieval church	MCO6503	Medieval	Stoke Climsland parish church.
STOKE CLIMSLAND - Medieval dovecote, Post Medieval dovecote	MCO10579	Medieval	A dovecote at Stoke Climsland is listed by Robertson & Gilbert.
STOKE CLIMSLAND - Medieval plain an gwarry	MCO45312	Medieval	The site of a playing place close to Stoke Climsland churchyard in 1601.
STOKE CLIMSLAND - Medieval settlement	MCO16906	Medieval	The settlement of Stoke Climsland is first recorded in 1193.
STOKE CLIMSLAND - Medieval/ Post Medieval hollow way	MCO74509	Medieval	A deep lane or hollow way with possible medieval origins, flanked by stone hedges and densely packed mature trees, survives as a public right of way.
STOKE CLIMSLAND - Medieval/ Post Medieval hollow way	MCO74509	Medieval	A deep lane or hollow way with possible medieval origins, flanked by stone hedges and densely packed mature trees, survives as a public right of way.
STOKE CLIMSLAND - Modern abattoir	MCO47521	Modern	The abattoir was possibly converted from a farm building into an abattoir.
STOKE CLIMSLAND - Post Medieval almshouse	MCO47530	Post Medieval	A pair of almshouses is recorded north of Stoke Climsland however only one survives.

STOKE CLIMSLAND - Post Medieval brewery, Post Medieval bell foundry	MCO47523	Post Medieval	The possible site of a bell foundry and also the possible site of a later brewery.
STOKE CLIMSLAND - Post Medieval milestone	MCO49116	Post Medieval	A milestone, probably late C18, survives on the west side of an unclassified road at Stoke Climsland - III C.
STOKE CLIMSLAND - Post Medieval pound	MCO47529	Post Medieval	The Manorial Pound is recorded here on the Tithe Map c1842.
STOKE CLIMSLAND - Post Medieval step stile	MCO72335	Post Medieval	A post medieval granite step stile in the parish of Stoke Climsland
STOKE CLIMSLAND - Post Medieval teachers house, Post Medieval school	MCO53287	Post Medieval	National School and schoolmaster's house, built 1850-3. Recorded on the 1st and 2nd Editions of the 1:2500 1880 and 1907 OS map.
STOKE CLIMSLAND - Post-medieval stile	MCO72289	Post Medieval	A post-medieval stile in the parish of Stoke Climsland
STOKE CLIMSLAND - Post-medieval stile	MCO72336	Post Medieval	A post-medieval stile in the parish of Stoke Climsland
STOKE CLIMSLAND - Post-medieval stile	MCO72337	Post Medieval	A post-medieval stile in the parish of Stoke Climsland
STOKECLIMSLAND - Possible Prehistoric banked enclosure or hillfort	MCO67129	Prehistoric	A linear earthwork feature has been observed using Lidar running N-S. Its function is currently unknown but based on its prominent location at the top of a rise it is possible it is the relict remains of a Prehistoric banked enclosure or hillfort. More in
TAILORS SHOP - Post Medieval milestone	MCO52444	Post Medieval	A stone milestone survives on the eastern side of the A388 on the northern side of Tailor's Shop Plantation - L8 and C2½.
TAYLOR SHOP - Post Medieval boundary stone	MCO54476	Post Medieval	A parish boundary stone, possibly mid C18, survives on the SW side of the B3257 between Stoke Climsland and South Hill parishes, NW of Taylor Shop.
TAYLOR SHOP - Post Medieval toll house	MCO47650	Post Medieval	An early C19 toll gate house survives at Taylor Shop
TOOKMILL WOOD - Post Medieval quarry	MCO39653	Post Medieval	A disused quarry and associated trackway are visible on air photographs
TORR - Medieval settlement	MCO17044	Medieval	The settlement of Torr is first recorded in 1337.
TORR - Post Medieval cider mill, Post Medieval findspot, Post Medieval farmstead, Post Medieval farmhouse	MCO47535	Post Medieval	Torr Farm consists of one building possibly a converted C19 barn, earthworks suggesting a larger settlement.
TORR - Post Medieval quarry	MCO40280	Post Medieval	A quarry recorded as "disused" on the 1st Edition 6" OS map is visible on aerial photographs.
TRECOMBE - Post Medieval blacksmiths workshop, Post Medieval settlement	MCO47202	Post Medieval	Earthworks and building platforms are all that survive of a shrunken settlement on the northern side of the lane at Trecombe.
TRECOMBE - Post Medieval cottage pair	MCO47199	Post Medieval	Two pair of game keep cottages both built in 1864 (datestone) by the Duke of Bedford's estate.

TRECOMBE - Post Medieval findspot, Post Medieval cider mill	MCO47201	Post Medieval	To the rear what seems to be the cider mill is the lower grindstone.
TRECOMBE - Post Medieval lodge	MCO47205	Post Medieval	A lodge house built in 1811 (date stone) is of similar style to the game keeper cottages (171247) and the cottage for the woodman (171245).
TRECOMBE - Post Medieval saw pit, Post Medieval saw mill	MCO47200	Post Medieval	The site of a saw mill, originally for the Duke of Bedford estate's is located in the wood to the east of Trecombe.
TREHILL - Medieval settlement	MCO17407	Medieval	The settlement of Trehill is first recorded in 1337.
TREHILL - Modern quarry	MCO39896	Modern	A quarry is marked at this location on recent OS maps
TREHILL - Post Medieval cow house, Post Medieval farmhouse	MCO47543	Post Medieval	An C18 barn was converted in the C19 to a farmhouse.
TREHILL - Post Medieval quarry	MCO47544	Post Medieval	A stone quarry cut back into the hillside survives east of Trehill.
TREHINGSTA - Medieval settlement	MCO17409	Medieval	The settlement of Trehingsta is first recorded in 1284.
TREHINGSTA - Post Medieval farmhouse	MCO47100	Post Medieval	A ruined granite dwelling with a collapsed roof is located here. It has a C17 chamfered granite fireplace in situ in the south west gable end wall.
TREKENNER BRIDGE - Medieval bridge	MCO9741	Medieval	Trekenner Bridge is a C16 bridge that crosses the River Inney.
TREKENNER BRIDGE - Post Medieval building platform	MCO47107	Post Medieval	A building platform sited within a disused stone quarry is all that remains of a possible C18 gamekeeper's cottage. The building was demolished in c1910.
TRELANE - Medieval settlement	MCO17436	Medieval	The settlement of Trelane is first recorded in 1337 and last recorded c1848.
TRELANE - Post Medieval findspot, Post Medieval cider mill	MCO47468	Post Medieval	Foundation and walls is all that survive of a building, possibly a cider mill.
TRELEIGH - Medieval settlement	MCO47246	Medieval	The settlement of Treleigh is first recorded in 1337.
TRELEIGH - Post Medieval findspot, Post medieval cemetery?	MCO47249	Post Medieval	The find of a stone cut/shaped coffin lid and place name evidence suggest the site of a post medieval burial ground.
TREOVIS - Medieval corn mill, Post Medieval corn mill	MCO23447	Medieval	Treovis mill is recorded in 1469, as "Ovesemyll".
TREOVIS - Post Medieval bridge	MCO47472	Post Medieval	A small bridge built in approx 1777 crosses the river below Treovis Mill.
TREOVISTOWN - Medieval settlement	MCO17648	Medieval	The settlement of Treovis is first recorded in 1303 when it is spelt "Atte Hevese".

TREOVISTOWN - Post Medieval spoil heap, Post Medieval shaft	MCO47465	Post Medieval	An infilled mine shaft and spoil heaps are all that survive of a probable C18 copper mine.
TRESALLACK - Early Medieval settlement, Medieval settlement	MCO17681	Early Medieval	The settlement of Tresallack is first recorded in 1201.
TRESALLACK - Post Medieval farmhouse, Post Medieval settlement	MCO47101	Post Medieval	An area of low earthworks is visible to the east of the farmhouse at Tresallack, possibly indicating an earlier settlement.
TUTWELL - C20 fingerpost	MCO57730	Modern	A short cast iron fingerpost survives on the NE side of an unclassified road junction SW of Tutwell.
TUTWELL - Medieval settlement	MCO47263	Medieval	The settlement of Tutwell is first recorded in 1337 when it is spelt "Tothewill".
TUTWELL - Post Medieval findspot, Post Medieval cider mill, Post Medieval farmstead	MCO47265	Post Medieval	A C18 derelict farmhouse still survives with its north and west walls still standing.
TUTWELL - Post Medieval well, Post Medieval settlement	MCO47264	Post Medieval	A ruined pair of cottages, now roofless are located at Tutwell.
UNDERHILL - Post Medieval settlement	MCO47262	Post Medieval	An area of earthworks and building platforms is all that survives of three farm workers' cottages.
UNDERHILL - Post Medieval spoil heap, Post Medieval adit, Post Medieval shaft, Post Medieval tramway, Post Medieval mine	MCO47260	Post Medieval	The C19 mine building with round brick arched doorway survives. A shaft, adit, spoil heaps and tramway are visible, possible wolfram mine.
UNDERHILL COTTAGES - Medieval streamworks, Post Medieval shaft	MCO47198	Medieval	An of earth works suggests a tin streaming works rather than drainage.
UNDERHILL COTTAGES - Post Medieval cottage pair	MCO47197	Post Medieval	A pair of woodman cottages built in 1865 (datestone) by the Duke of Bedford's estate.
UPCOTT - Medieval settlement	MCO47253	Medieval	The settlement of Upcott is first recorded in 1337.
UPCOTT - Post Medieval barn	MCO47255	Post Medieval	A field barn is recorded here on the 2nd Edition 1:2500 OS map c1908 and still survives.
UPCOTT - Post Medieval farm building	MCO47254	Post Medieval	An area of slight earthworks is all that survives of farm buildings, north of Upcott farmhouse. The barn has been converted.
UPCOTT - Post Medieval nonconformist chapel	MCO32722	Post Medieval	A Free United Methodist Chapel is recorded on the 2nd Edition OS map c1908.
UPCOTT - Post Medieval nonconformist chapel, Post Medieval sunday school	MCO47196	Post Medieval	A Free United Methodist chapel is recorded on the 1st Edition OS map c1880.

VENTERDON - Medieval settlement	MCO18199	Medieval	The settlement of Venterdon is first recorded in 1303.
VENTERDON - Modern blacksmiths workshop	MCO9430	Modern	A smithy at Venterdon is recorded as being occupied by J Peters in the Tithe Award c1842.
VENTERDON - Post Medieval architectural fragment	MCO47531	Post Medieval	Architectural fragments have been built into the north elevation of a cottage.
VENTERDON - Post Medieval cider mill, Post Medieval findspot, Post Medieval horse engine house	MCO47532	Post Medieval	A five sided horse engine house survives south of Venterdon and a cider mill stone is visible, suggesting the site of a cider mill.
VENTERDON - Post Medieval nonconformist chapel	MCO32723	Post Medieval	A late C19 Methodist chapel survives surrounded by its grave yard.
VENTERDON - Post Medieval pump, Post Medieval well, Post Medieval farmhouse	MCO47533	Post Medieval	Venterdon farmhouse was built in "1684" (date stone).
WAREHAM WOOD - Post Medieval summerhouse, Post Medieval gazebo	MCO47195	Post Medieval	A wooden tongue and grove gazebo with a slate roof survives and an cobbled floor is all that survives of the summerhouse.
WELLTOWN - Medieval settlement	MCO47226	Medieval	The settlement of Welltown is first recorded in 1337 when it is spelt "La Wille".
WELLTOWN - Post Medieval quarry	MCO39895	Post Medieval	A quarry is marked at this location on the 1880 1st Edition OS map
WELLTOWN - Post Medieval settlement	MCO47225	Post Medieval	An area of earthworks is all that remains of a deserted settlement north east of Welltown.
WEST COOMBESHEAD - C18 field system	MCO63058	Post Medieval	Excavated field system, a phase of reorganisation of field boundaries, the smaller subdivisions being removed and boundaries re-aligned to create larger and more regular fields. A pair of linear ditches that form a single boundary was still in use in the
WEST COOMBESHEAD - Medieval chapel	MCO10371	Medieval	The field-name 'Church Park' suggests the site of a chapel but there are no remains.
WEST COOMBESHEAD - Medieval fieldsystem	MCO63056	Medieval	Extant group of ditches uncovered during excavation, grouped by similarity of form and size, their curving alignments akin to the curving boundaries associated with medieval fieldsystems.
WEST COOMBESHEAD - Post Medieval field system	MCO63057	Post Medieval	Excavated ditches and gully, straight-sided and orientated north-east to south-west or north-west to south-east are likely to represent a phase of post-medieval reorganisation of field systems, including the creation and sub-division of more regimented pa
WEST COOMBESHEAD - Post Medieval settlement	MCO47675	Post Medieval	A small area of earthworks in the orchard and the Listed barn is all that survive of the earlier settlement.

WESTHILL WOOD - Post Medieval bridge	MCO47099	Post Medieval	A small granite stone lintel bridge carries a lane over a small stream.
WHEAL TOM - Iron Age round, Romano British round, Undated enclosure	MCO8905	Prehistoric	An oval platform approx 28m by 20m surrounded by a low spread bank forming an oval enclosure, 45m by 42m.
WHEAL TOM - Post Medieval engine house	MCO52769	Post Medieval	Engine house situated on the site of Wheal Tom, which had a pumping engine.
WHEAL TOM - Post Medieval shaft	MCO40272	Post Medieval	A spoil tip associated with a probable shaft is visible as an area of overgrown disturbed ground on aerial photographs.
WHEAL TOM - Prehistoric findspot	MCO1837	Prehistoric	Flint scatter and a possible broken whetstone fragment.
WHITEFORD - Early Medieval field boundary, Medieval field boundary	MCO40281	Early Medieval	A field boundary is visible as a bank, 170m long, on air photographs
WHITEFORD - Medieval field system, Post Medieval field system	MCO29666	Medieval	Two small enclosures and a trackway are visible on aerial photographs.
WHITEFORD - Post Medieval cellar	MCO47588	Post Medieval	Brick vaulted cells survive at north and west of the servants quarters and are cut back into the slope.
WHITEFORD - Post Medieval country house	MCO51877	Post Medieval	The mansion at Whiteford was demolished c1913.
WHITEFORD - Post Medieval findspot, Post Medieval horse engine house, Post Medieval wheel pit, Post Medieval reservoir, Post Medieval saw mill	MCO47587	Post Medieval	A 1.5m wide sawmill wheelpit has been infilled at Whiteford.
WHITEFORD - Post Medieval folly	MCO47583	Post Medieval	A folly in the form of a temple, latterly a cows house, now a holiday home was built by Sir John Call in 1799.
WHITEFORD - Post Medieval ha ha	MCO41380	Post Medieval	The remains of a possible ha-ha are visible to the north of Whiteford Gardens.
WHITEFORD - Post Medieval ha ha, Post Medieval fountain	MCO47589	Post Medieval	An ornamental granite and concrete fountain with a concrete outer base is located on the east side of the main house platform.
WHITEFORD - Post Medieval quarry	MCO40279	Post Medieval	A quarry is marked as disused at this location on the 1880 1st Edition OS map
WHITEFORD - Post Medieval well	MCO47590	Post Medieval	A step-down well approx 3.0m deep supplied water to the main house and fountain.
WHITEFORD PLANTATION - Medieval/Post Medieval field boundary	MCO40283	Medieval	A series of irregular stony banks is visible on air photographs
WINSLADE - Medieval settlement	MCO18370	Medieval	The settlement of Winslade is first recorded in 1229.

WINSLADE - Medieval settlement	MCO47108	Medieval	An area of low earthworks is all that remains of the settlement which is documented on the Tithe Map c1842.
WINSLADE - Post Medieval settlement	MCO47109	Post Medieval	The C19 construction of the buildings at Winslade supports the suggestion that the original settlement recorded in 1229 was located to the north-west this site.
WINSOR - Post Medieval hollow way, Post Medieval earthwork	MCO47572	Post Medieval	An area of earthworks northeast of Winsor is probably associated with mining or transport.
WOLSTON - Post Medieval settlement	MCO47537	Post Medieval	An area of earthworks, low small mounds, is all that survives of Wolston (Woolson) recorded by Martyn c1748.
WOODA - Medieval settlement	MCO18387	Medieval	The settlement of Wooda is first recorded in 1468.
WOODA - Post Medieval horse engine house	MCO47103	Post Medieval	Evidence that a horse engine house use to be sited to the rear of a C18 barn at Wooda is supported by the location of a bearing stone and the reuse of granite posts.
WOODA - Undated findspot	MCO47104	Undated	Two stones: the first has a number of small round/square holes; the other is a small carved basin, broken in half.
WOODA PARKHILL WOOD - Post Medieval quarry	MCO47106	Post Medieval	An outcrop of granite in the side of the valley seems to have been worked and quarried from the rock face.
WOODABRIDGE - Post Medieval bridge	MCO47111	Post Medieval	A road bridge, probably late C18 early C19 with minor later repairs, carries the A388 over the River Inney at Woodabridge.
WOODABRIDGE - Post Medieval streamworks	MCO47102	Post Medieval	An area of earthworks is visible in the steep part of the valley, possibly evidence of steamworking.
WOODABRIDGE - Post Medieval toll house	MCO55211	Post Medieval	The remains of a toll-house south of Woodabridge.

Part B: Cropmarks.

Name	Reference	Period	Summary
BOZION - Prehistoric pit	MCO29833	Prehistoric	Squarish pit or hollow, 10m x 10m, sited centrally within enclosure 50149, visible as a soil mark on air photographs
BURROWS - Iron Age round, Romano British round, Undated enclosure	MCO39906	Prehistoric	An oval enclosure, 120m by 86m, visible as an indistinct cropmark bank on aerial photographs.
HIGHER KELLYBRAY - Early Medieval hollow way, Early Medieval field boundary, Post Medieval hollow way, Post Medieval field boundary	MCO40293	Early Medieval	A field boundary is visible as a crop mark ditch and bank on air photographs

HURLDOWN - Early Medieval field boundary, Undated field boundary	MCO40268	Early Medieval	A field boundary is visible on air photographs
KINGSTON - Early Medieval field system, Medieval field system	MCO39890	Early Medieval	A series of field boundaries are visible as crop mark banks on aerial photographs.
MIDDLE HAMPT - Prehistoric enclosure, Iron Age round, Romano British round	MCO21706	Prehistoric	A curvilinear, univallate enclosure, 55m in diameter with a single bank, visible as a cropmark on aerial photographs.
SHUTTA - Medieval field system, Undated field system	MCO40275	Medieval	A series of field boundaries is visible as crop mark banks on air photographs
SOUTH COOMBESHEAD - Early Medieval field boundary	MCO40282	Early Medieval	A field boundary is visible as a crop mark bank on aerial photographs.
TREMEERE - Medieval field system, Undated field system	MCO40884	Medieval	Two field boundaries are visible as crop marks on air photographs
WEST COOMBESHEAD - Early Medieval field boundary, Medieval field boundary	MCO39595	Early Medieval	A field boundary, 140m long, is visible as a crop mark bank on aerial photographs.
WHITEFORD - Undated enclosures	MCO29664	Prehistoric	Two small sub-rectangular enclosures surviving as low earth banks are visible on aerial photographs; their function is uncertain.
WHITEFORD GARDENS - Undated field system	MCO29665	Undated	A fragment of field system surviving as crop mark ditches in a field south of Whiteford Gardens

Part C: Documentary Evidence

Name	Reference	Period	Summary
BEALS FARM - C19 orchard	MCO72989	Post Medieval	Site of orchard recorded on the 1880 and 1907 OS mapping. Also visible on aerial photos dating from the 1940s
BEALSMILL - C20 orchard	MCO72990	Modern	Site of orchard visible on aerial photos dating from the 1940s
BRIDGE FARM - C19 orchard	MCO73953	Post Medieval	Site of orchard recorded on the 1840 tithe map
BRIDGE FARM - C19 Orchard	MCO77926	Post Medieval	Orchard on the edge of woodland, recorded as in cultivation in the early 19th century
BRIDGE FARM - Post Medieval orchard	MCO72980	Post Medieval	Site of orchard visible on aerial photos from the 1940s and on mapping from the 1960s on which it is recorded as growing apples and grass
BROADGATE - C18 orchard	MCO76905	Post Medieval	Site of orchard recorded on Gardener's Map of 1784
BROADGATE - C18 orchard	MCO76906	Post Medieval	Site of orchard recorded on Gardener's Map of 1784
BROADGATE - C18 orchard	MCO76907	Post Medieval	Site of orchard recorded on Gardener's Map of 1784

BROADGATE - C18 orchard	MCO76908	Post Medieval	Site of orchard recorded on Gardener's Map of 1784
BROADGATE - C19 orchard	MCO72952	Post Medieval	Site of orchard recorded on 1880 and 1907 OS mapping and aerial photos dating from the 1940s
BROADGATE - C20 orchard	MCO73942	Modern	Site of orchard recorded on the second edition OS 1:2500 mapping dating from 1907
BROADGATE - C20 orchard	MCO73943	Modern	Site of orchard recorded on the second edition OS 1:2500 mapping dating from 1907
BURRATON - Medieval settlement	MCO13656	Medieval	The settlement of Burraton is first recorded in 1296.
BURROWS - C19 orchard	MCO77092	Post Medieval	Site of orchard recorded on the Tithe map of 1840
BURROWS - C20 orchard	MCO74576	Modern	Site of orchard visible on aerial photographs from the 1940s
CLITTERS - C20 orchard	MCO73941	Modern	Site of orchard recorded on the second edition OS 1:2500 mapping dating from 1907
CLITTERS FARM - C20 market garden	MCO74406	Modern	Site of market garden visible on 1940s aerial photographs
CLITTERS FARM - C20 market garden	MCO74407	Modern	Site of market garden visible on 1940s aerial photographs
CLITTERS FARM - C20 orchard	MCO73940	Modern	Site of orchard recorded on the second edition OS 1:2500 mapping dating from 1907
DEANS - C19 miners' smallholding	MCO75388	Post Medieval	Area of land identified as a C19 miners' smallholding using documentary research
DEER PARK FARM - Medieval deer park	MCO23448	Medieval	The place name 'Deer Park Farm' refers to the former 'Carrybullock Deer Park' which is considered likely to date to the C13.
DEERPARK MINE - Post Medieval mine	MCO11997	Post Medieval	Deerpark Mine commenced operations in 1852 but was a casualty of the tin mining depression of 1875/6.
DOWNGATE - C19 miners' smallholding	MCO75375	Post Medieval	Area of land identified as a C19 miners' smallholding using documentary research
DOWNGATE - C19 miners' smallholding	MCO75376	Post Medieval	Area of land identified as a C19 miners' smallholding using documentary research
DOWNGATE - C19 miners' smallholding	MCO75377	Post Medieval	Area of land identified as a C19 miners' smallholding using documentary research
DOWNGATE - C19 miners' smallholding	MCO75381	Post Medieval	Area of land identified as a C19 miners' smallholding using documentary research
DOWNGATE - C19 miners' smallholding	MCO75382	Post Medieval	Area of land identified as a C19 miners' smallholding using documentary research
DOWNGATE - C19 miners' smallholding	MCO75385	Post Medieval	Area of land identified as a C19 miners' smallholding using documentary research

DOWNGATE - C19 miners' smallholding	MCO75386	Post Medieval	Area of land identified as a C19 miners' smallholding using documentary research
DOWNGATE - C19 miners' smallholding	MCO75387	Post Medieval	Area of land identified as a C19 miners' smallholding using documentary research
DOWNGATE - C19 miners' smallholding	MCO75391	Post Medieval	Area of land identified as a C19 miners' smallholding using documentary research
DOWNGATE - Post Medieval mine	MCO12010	Post Medieval	Downgate mine was worked for mispickel and wolfram between 1914 and 1919
DOWNHOUSE - C19 orchard	MCO72986	Post Medieval	Site of orchard recorded on 1880 and 1907 OS mapping. Also visible on aerial photos from the 1940s
DOWNHOUSE - C20 market garden	MCO74410	Modern	Site of market garden visible on 1940s aerial photographs
EAST HOLMBUSH - Post Medieval mine	MCO12046	Post Medieval	East Holmbush Mine was worked as part of Callington United Mines.
EAST KIT HILL MINE - Post Medieval mine	MCO12048	Post Medieval	East Kit Hill Mine was working tin in 1853, and later became part of Kit Hill United Mines.
EXCELSIOR - Modern mine	MCO12088	Modern	Excelsior mine was in operation between 1877 and 1939 and was used by Atomic Engery Authority in the 1960's
EXCELSIOR - Post Medieval mine	MCO12087	Post Medieval	A small and unsuccessful tin producer later included in Kit Hill United.
GOOSEWELL - C19 orchard	MCO72988	Post Medieval	Site of orchard recorded on the 1880 and 1907 OS mapping. Also visible on aerial photos dating from the 1940s
GREAT WHEAL SHEBA - Post Medieval mine	MCO12149	Post Medieval	Great Wheal Sheba was worked for copper from 1854 and closed in the 1880's
HAMPT WOOD - C19 orchard	MCO73952	Post Medieval	Site of orchard recorded on the Tithe Map of 1840 and the second edition OS 1:2500 mapping dating from 1907
HIGHER HAMPT - C18 orchard	MCO67905	Post Medieval	Site of orchard recorded on Gardener's Map of 1784.
HIGHER HAMPT - C18 orchard	MCO67906	Post Medieval	Site of orchard recorded on Gardener's Map of 1784. This parcel of land is also recorded on the Tithe mapping of 1840 as being used as an orchard
HIGHER HAMPT - C18 orchard	MCO72960	Post Medieval	Site of orchard recorded on Gardener's Map dated 1784

HIGHER HAMPT - C18 orchard	MCO72961	Post Medieval	Site of orchard recorded on Gardener's Map dated 1784
HIGHER HAMPT - C18 orchard	MCO72962	Post Medieval	Site of orchard recorded on Gardener's Map dated 1784. It is also recorded on the 1880 and 1907 OS mapping. It is also visible on aerial photos dating from the 1940s
HIGHER HAMPT - C18 orchard	MCO72965	Post Medieval	Site of orchard recorded on Gardener's Map of 1784
HIGHER HAMPT - C18 orchard	MCO72966	Post Medieval	Site of orchard recorded on Gardener's Map of 1784
HIGHER HAMPT - C18 orchard	MCO72967	Post Medieval	Site of orchard recorded on Gardener's Map of 1784
HIGHER HAMPT - C18 orchard	MCO72968	Post Medieval	Site of orchard recorded on Gardener's Map of 1784
HIGHER HAMPT - C18 orchard	MCO72969	Post Medieval	Site of orchard recorded on Gardener's Map of 1784. It is also recorded as an orchard on the 1840 Tithe mapping and on the 1880 and 1907 OS mapping. It is also visible on aerial photos dating from the 1940s
HIGHER HAMPT - C19 orchard	MCO77112	Post Medieval	Site of orchard recorded on the Tithe map of 1840
HIGHER HAMPT - C19 orchard	MCO77113	Post Medieval	Site of orchard recorded on the Tithe map of 1840
HIGHER HAMPT - C19 orchard	MCO77114	Post Medieval	Site of orchard recorded on the Tithe map of 1840
HIGHER HAMPT - C20 orchard	MCO72963	Modern	Site of orchard visible on aerial photos dating from the 1940s
HIGHER HAMPT - C20 orchard	MCO72964	Modern	Site of orchard visible on aerial photos dating from the 1940s
HIGHER HAMPT - C20 orchard	MCO72970	Modern	Site of orchard visible on aerial photos dating from the 1940s
HIGHER HAMPT - C20 orchard	MCO72971	Modern	Site of orchard visible on aerial photos dating from the 1940s
HIGHER HAMPT - C20 orchard	MCO72972	Modern	Site of orchard visible on aerial photos dating from the 1940s
HIGHER HAMPT - C20 orchard	MCO72973	Modern	Site of orchard visible on aerial photos dating from the 1940s

HIGHER LIDWELL - C18 orchard	MCO67904	Post Medieval	Site of orchard recorded on Gardener's Map of 1784.
HIGHER PEMPWELL - C19 orchard	MCO77099	Post Medieval	Site of orchard recorded on the Tithe map of 1840 and the second edition OS 1:2500 mapping
HIGHER PEMPWELL - C20 orchard	MCO77098	Modern	Site of orchard recorded on the second edition OS 1:2500 mapping
HOLWELL FARM - C19 orchard	MCO72984	Post Medieval	Site of orchard recorded on 19th and 20th century mapping. Also visible on aerial photographs from the 1940s
HOLWELL FARM - C19 orchard	MCO73950	Post Medieval	Site of orchard recorded on the c1840 tithe map
HOLWELL FARM - C19 orchard	MCO73951	Post Medieval	Site of orchard recorded on the Tithe Map of 1840 and the second edition OS 1:2500 mapping dating from 1907
HOLWELL FARM - C19 orchard	MCO77925	Post Medieval	Site of orchard recorded on 19th and 20th century mapping.
HOLWELL FARM - C19 orchard	MCO72985	Post Medieval	Site of orchard and barn recorded on the tithe of c1840, and depicted on 1880 and 1907 Ordnance Survey mapping. Also visible on aerial photographs from the 1940s
HOLWELL FARM - C20 orchard	MCO73949	Post Medieval	Site of orchard recorded on the tithe map of c1840
HOLWELL FARM - Post Medieval orchard	MCO73948	Post Medieval	Site of orchard recorded on the tithe map of c1840
KELLY BRAY - Post Medieval mine	MCO12197	Post Medieval	This mine worked intermittently from the early nineteenth century until 1892.
KELLYHOLE - C18 orchard	MCO67902	Post Medieval	Site of orchard recorded on Gardener's Map of 1784
KINGSTON CONSOLS - Post Medieval mine	MCO12204	Post Medieval	Kingston Consols mine worked for zinc, lead and silver between 1872 and 1879 and is marked on the 1st Edition 6" OS map c1882.
LITTLE NORTHDOWN - C19 orchard	MCO72992	Post Medieval	Site of orchard recorded on the 1880 and 1907 OS mapping and visible on aerial photos dating from the 1940s
LOWER HAMPT - C18 orchard	MCO67908	Post Medieval	Site of orchard recorded on Gardener's Map of 1784. This parcel of land is also recorded on the Tithe mapping of 1840 and the OS 1880 mapping as being used as an orchard. An orchard is also visible on RAF aerial photographs dating from the 1940s and this

LOWER HAMPT - C18 orchard	MCO72974	Post Medieval	Site of orchard recorded on Gardener's Map dated 1784
LOWER HAMPT - C18 orchard	MCO72976	Post Medieval	Site of orchard recorded on Gardener's Map of 1740 and on the 1840 Tithe mapping as an orchard
LOWER HAMPT - C18 orchard	MCO72977	Post Medieval	Site of orchard recorded on Gardener's Map of 1740 and on the 1840 Tithe mapping as an orchard. It is also recorded on the 1880 OS mapping. It is visible on aerial photos dating from the 1940s and is recorded on a Landuse map from the 1960s as growing app
LOWER HAMPT - C19 orchard	MCO72975	Post Medieval	Site of orchard recorded on the 1840 Tithe mapping as an orchard. It is also depicted on the 1880 OS mapping. It is also visible on aerial photos dating from the 1940s and mapping from the 1960s, being recorded in the 1960s as growing apples and grass
LOWER HAMPT - C19 orchard	MCO77117	Post Medieval	Site of orchard recorded on the Tithe map of 1840
LOWER HAMPT - C20 orchard	MCO72978	Modern	Site of orchard visible on aerial photos dating from the 1940s and is recorded on a Landuse map from the 1960s as growing apples and grass
LOWER LIDWELL - C18 orchard	MCO67903	Post Medieval	Site of orchard recorded on Gardener's Map of 1784. This parcel of land is also recorded as being used as an orchard on the 1840 Tithe mapping
LOWER LIDWELL - C18 orchard	MCO72954	Post Medieval	Site of orchard recorded on Gardener's Map dated 1784. It is also recorded as an orchard on the Tithe map of 1840
LOWER LIDWELL - C18 orchard	MCO72957	Post Medieval	Site of orchard recorded on a gardeners' map dated 1784
LOWER LIDWELL - C18 orchard	MCO72958	Post Medieval	Site of orchard recorded on Gardener's Map dated 1784. It is also recorded as an orchard on the 1840 Tithe mapping and the 1880 and 1907 OS mapping. It is also visible on aerial photos dating from the 1940s
LOWER LIDWELL - C19 orchard	MCO72955	Post Medieval	Site of orchard recorded as an orchard on the Tithe map of 1840. It is also recorded on the 1880 and 1907 OS mapping and on aerial photos dating from the 1940s

LOWER LIDWELL - C19 orchard	MCO72956	Post Medieval	Site of orchard recorded as an orchard on the Tithe map of 1840. It is also visible on aerial photos dating from the 1940s
LOWER LIDWELL - C19 orchard	MCO72959	Post Medieval	Site of orchard recorded on the 1880 and 1907 OS mapping. It is also visible on aerial photos dating from the 1940s
LOWER LIDWELL - C19 orchard	MCO77107	Post Medieval	Site of orchard recorded on the Tithe map of 1840
LOWER LIDWELL - C19 orchard	MCO77108	Post Medieval	Site of orchard recorded on the Tithe map of 1840
LOWER LIDWELL - C19 orchard	MCO77109	Post Medieval	Site of orchard recorded on the Tithe map of 1840
LOWER LIDWELL - C19 orchard	MCO77110	Post Medieval	Site of orchard recorded on the Tithe map of 1840
LOWER LIDWELL - C19 orchard	MCO77111	Post Medieval	Site of orchard recorded on the Tithe map of 1840
LUCKETT - C18 orchard	MCO67896	Post Medieval	Site of orchard recorded on Gardener's Map of 1784
LUCKETT - C18 orchard	MCO67897	Post Medieval	Site of orchard recorded on Gardener's Map of 1784
LUCKETT - C18 orchard	MCO67899	Post Medieval	Site of orchard recorded on Gardener's Map of 1784. This parcel of land is also recorded as being in use as an orchard on the OS mapping of 1880
LUCKETT - C18 orchard	MCO67900	Post Medieval	Site of orchard recorded on Gardener's Map of 1784
LUCKETT - C19 miners' smallholding	MCO75392	Post Medieval	Area of land identified as a C19 miners' smallholding using documentary research
LUCKETT - C19 orchard	MCO74357	Post Medieval	Site of orchard recorded on the 1880 OS 1:2500 mapping
LUCKETT - C19 orchard	MCO74358	Post Medieval	Site of orchard recorded on the 1880 OS 1:2500 mapping
LUCKETT - C19 orchard	MCO74359	Post Medieval	Site of orchard recorded on the 1880 OS 1:2500 mapping
LUCKETT - C20 allotment	MCO74423	Modern	Site of allotments visible on aerial photographs dating from the 1940s
LUCKETT - Post Medieval malt house	MCO29468	Post Medieval	A malthouse at Lockett is recorded on the Tithe Award c1842.
LUCKETT DOWN - C19 miners' smallholding	MCO75369	Post Medieval	Area of land identified as a C19 miners' smallholding using documentary research
LUCKETT DOWN - C19 miners' smallholding	MCO75371	Post Medieval	Area of land identified as a C19 miners' smallholding using documentary research

MANOR COTTAGE - C19 miners' smallholding	MCO75389	Post Medieval	Area of land identified as a C19 miners' smallholding using documentary research
MIDDLE HAMPT - C18 orchard	MCO67907	Post Medieval	Site of orchard recorded on Gardener's Map of 1784. This parcel of land is also recorded on the OS 1880 mapping as being used as an orchard
MIDDLE HAMPT - C19 orchard	MCO72979	Post Medieval	Site of orchard recorded on the 1840 Tithe mapping as an orchard and on the 1880 OS mapping. It is also visible on aerial photos from the 1940s
MIDDLE HAMPT - C19 orchard	MCO73944	Post Medieval	Site of orchard recorded on the Tithe Map of 1840 and the second edition OS 1:2500 mapping dating from 1907
MIDDLE HAMPT - C19 orchard	MCO73945	Post Medieval	Site of orchard recorded on the Tithe Map of 1840 and the first and second edition OS 1:2500 mapping dating from 1880 and 1907 respectively
MIDDLE HAMPT - C19 orchard	MCO77115	Post Medieval	Site of orchard recorded on the Tithe map of 1840
MIDDLE HAMPT - C19 orchard	MCO77116	Post Medieval	Site of orchard recorded on the Tithe map of 1840
MUGFORD - C19 orchard	MCO72953	Post Medieval	Site of orchard recorded on 1880 and 1907 OS mapping and aerial photos dating from the 1940s
NEWMILL - C20 market garden	MCO76909	Modern	Site of market garden visible on aerial photos dating from the 1940s
NEWMILL - C20 market garden	MCO76910	Modern	Site of market garden visible on aerial photos dating from the 1940s
NEWMILL - C20 orchard	MCO73938	Modern	Site of orchard recorded on the second edition OS 1:2500 mapping dating from 1907
NEWMILL - C20 orchard	MCO73939	Modern	Site of orchard recorded on the second edition OS 1:2500 mapping dating from 1907
NORTH ALSTON - C19 orchard	MCO72981	Post Medieval	Site of orchard recorded on 1880 and 1907 OS mapping. Also visible on aerial photos from the 1940s and mapping from the 1960s on which it was recorded as growing apples/grass
NORTH ALSTON - C19 orchard	MCO72982	Post Medieval	Site of orchard recorded on 1880 and 1907 OS mapping. Also visible on aerial photos from the 1940s
NORTH ALSTON - C19 orchard	MCO72983	Post Medieval	Site of orchard recorded on 1880 OS mapping. Also visible on aerial photos from the 1940s

NORTHDOWN - C19 orchard	MCO77091	Post Medieval	Site of orchard recorded on the Tithe map of 1840
OLD MILL - Post Medieval leat	MCO61222	Post Medieval	Extant remains of a Post Medieval leat serving a mill
OLDCLIMS - C19 orchard	MCO77094	Post Medieval	Site of orchard recorded on the Tithe map of 1840 and first edition 1:2500 OS mapping
OLDCLIMS - C19 orchard	MCO77095	Post Medieval	Site of orchard recorded on the Tithe map of 1840
OLDCLIMS - C19 orchard	MCO77096	Post Medieval	Site of orchard recorded on the Tithe map of 1840
OLDCLIMS - C19 orchard	MCO77097	Post Medieval	Site of orchard recorded on the Tithe map of 1840
OLDCLIMS - C20 orchard	MCO73946	Modern	Site of orchard recorded on the second edition OS 1:2500 mapping dating from 1907
OLDCLIMS - C20 orchard	MCO73947	Modern	Site of orchard recorded on the second edition OS 1:2500 mapping dating from 1907
PEMPWELL - C20 market garden	MCO74409	Modern	Site of market garden visible on 1940s aerial photographs
PRINCESS OF WALES - Post Medieval mine	MCO12459	Post Medieval	Also known as Kithill Castle
SHERWELL FARM - C20 market garden	MCO74405	Modern	Site of market garden visible on 1940s aerial photographs
SOUTH ALSTON - C19 orchard	MCO74424	Post Medieval	Site of orchard recorded on the 1880 OS 1:2500 mapping
SOUTH ALSTON - C19 orchard	MCO74425	Post Medieval	Site of orchard recorded on the 1880 and 1907 OS 1:2500 mapping
TRECOOMBE - C19 orchard	MCO73956	Post Medieval	Site of orchard recorded on the Tithe Map of 1840 and the second edition OS 1:2500 mapping dating from 1907
TRECOOMBE - C19 orchard	MCO77093	Post Medieval	Site of orchard recorded on the Tithe map of 1840
TREHALE - C19 orchard	MCO72991	Post Medieval	Site of orchard recorded on the 1880 and 1907 OS mapping and visible on aerial photos dating from the 1940s
TREOVISTOWN - C18 orchard	MCO67898	Post Medieval	Site of orchard recorded on Gardener's Map of 1784. This parcel of land is also recorded as being in use as an orchard on the OS mapping of 1880
TUTWELL - C19 orchard	MCO72987	Post Medieval	Site of orchard recorded as an orchard on the 1840 Tithe mapping. Also visible on aerial photos from the 1940s

TUTWELL - C19 orchard	MCO77106	Post Medieval	Site of orchard recorded on the Tithe map of 1840
TUTWELL - C19 orchard; C20 market garden	MCO74411	Post Medieval	Site of orchard recorded on the 1840 Tithe plan and visible as a market garden on 1940s aerial photographs
UNDERHILL - C19 orchard	MCO73954	Post Medieval	Site of orchard recorded on the Tithe Map of 1840 and the second edition OS 1:2500 mapping dating from 1907
UNDERHILL - C19 orchard	MCO77103	Post Medieval	Site of orchard recorded on the Tithe map of 1840
UNDERHILL - C19 orchard	MCO77105	Post Medieval	Site of orchard recorded on the Tithe map of 1840
UNDERHILL - C20 orchard	MCO73955	Modern	Site of orchard recorded on the second edition OS 1:2500 mapping dating from 1907
UNDERHILL - C20 orchard	MCO77104	Modern	Site of orchard recorded on the second edition OS 1:2500 mapping
UNDERHILL COTTAGES - C19 orchard	MCO77100	Post Medieval	Site of orchard recorded on the Tithe map of 1840
UNDERHILL COTTAGES - C19 orchard	MCO77101	Post Medieval	Site of orchard recorded on the Tithe map of 1840
UNDERHILL COTTAGES - C19 orchard	MCO77102	Post Medieval	Site of orchard recorded on the Tithe map of 1840
UNDERHILL COTTAGES - C19 orchard	MCO77927	Post Medieval	Site of orchard recorded on the Tithe map of 1840
WEST COOMBESHEAD - Post Medieval country house	MCO11798	Post Medieval	The site of an C18 house demolished in 1969-70, built on the site of a C17 mansion.
WEST HOLMBUSH - Post Medieval mine	MCO12772	Post Medieval	West Holmbush mine is marked on the 1907 OS map
WHEAL MARTHA - C18 orchard	MCO67901	Post Medieval	Site of orchard recorded on Gardener's Map of 1784
WHEAL MARTHA - C20 market garden	MCO74408	Modern	Site of market garden visible on 1940s aerial photographs
WHEAL TOM - Post Medieval mine	MCO13146	Post Medieval	Wheal Tom, a tin and copper mine was worked from 1850 to c1852.
WHITEFORD - Medieval settlement	MCO11799	Medieval	The settlement of Whiteford is first recorded in 1280.
WINSOR - C19 miners' smallholding	MCO75390	Post Medieval	Area of land identified as a C19 miners' smallholding using documentary research

WINSOR - C19 miners' smallholding	MCO75393	Post Medieval	Area of land identified as a C19 miners' smallholding using documentary research
--	----------	---------------	--